



inspiring
women



British
Consulate-General
Melbourne



MONASH
University

STEM sidebyside

inspiring women series final event

16 October 2018
Clarendon Auditorium
Melbourne Convention and Exhibition Centre

tweet us
#STEMsidebyside
#veski
@veskiorg



STEM sidebyside



inspiring
women



2018 program

The inspiring women **STEM sidebyside** program supports women in the STEM industries and is led by **veski** and Monash University with the support of the British Consulate General Melbourne. The **STEM sidebyside** program was launched by Minister Philip Dalidakis MP, Minister for Trade and Investment, Innovation & Digital Economy, Small Business, on Thursday, 22 March 2018 with activities delivered between May and October 2018.

This dynamic program of workshops and networking opportunities are designed to empower women at different career stages with the skills, networks and mindset to develop and achieve their career goals within STEM (Science, Technology, Engineering and Mathematics) industries.

We are proud to have delivered the following sessions:

31 May

Masterclass - Networking

18 June

Workshop - Leading Self with Courage

26 July

Workshop - The Entrepreneurship's Guide to Jumping Ship

Workshop - Getting on a Board

Masterclass - Developing your Brand using your Resume & LinkedIn profile

Panel discussions - Pathways from Academia to Industry

Panel discussions - Pathways to Entrepreneurship Industry

Showcase - Industry, Innovation and Entrepreneurship Networking

16 August

Workshop - Mentoring and Sponsorship

4 September

Masterclass - LinkedIn and how it can work for you

Panel discussion - The Art of Negotiation

Workshop - Having those difficult conversations

16 October

Workshop - Mastering video to excel your career



STEM sidebyside



inspiring
women



order of proceedings

Tuesday, 16 October 2018 - 6.00pm

This session is the final in the series of six that have been delivered to assist the following three, parallel streams of STEM women;

- **Leading the Way:** Mid-career emerging leaders (30 selected participants)
- **Stamina:** Women returning to work (10 selected participants)
- **Empowering You:** University students (up to 250)

Special Presentation

delivered by **Krystal De Napoli**

- To discuss her journey into STEM
- To discuss difficulties experienced as an Indigenous and STEM woman
- To elaborate on her work in astrophysics and astronomy

Address

delivered by **Baroness Kate Rock**

- To discuss her life in politics and what it took for her to succeed

Keynote Presentation

delivered by **Anne Belcher**

- To discuss her career pathway and lessons learnt along the way
- To elaborate on her role at GSK
- To discuss GSK's role in developing talent and supporting women leaders

Networking - 7.00pm

with key **veski** stakeholders across Industry.

Keynote Presentation

Anne Belcher

General Manager, GSK Australia



Anne Belcher has 27 years business experience including 25 years at GSK. She has experience and success in diverse market environments including both mature and developing markets and worked in New Zealand, Singapore, Indonesia, South Korea and Belgium in both local and regional roles.

Before joining GSK Australia, Anne Belcher was GSK's Head of Ethics and Compliance across Emerging Markets, Asia Pacific and Japan to strengthen commercial insight and business partnering in the function. Previously she held the position of General Manager of the Indonesian Pharmaceutical business, leading a team of approximately 1,000 employees.

Originally from New Zealand, Anne is a registered Pharmacist and joined GSK as a sales representative in New Zealand in 1991.

GSK is a science-led global healthcare company with a special purpose: to help people do more, feel better, live longer. We have three global businesses that research, develop and manufacture innovative pharmaceutical medicines, vaccines and consumer healthcare products. Here in Australia, just over 1,400 GSK employees work across sites in Victoria, New South Wales and across the country in customer-facing roles.

Our Pharmaceuticals business has a broad portfolio of innovative and established medicines. We currently focus on developing new medicines in respiratory, HIV, oncology and immuno-inflammation; with discovery research exploring these and other areas.

GSK is a primary supplier of vaccines to Australia and the largest supplier of childhood vaccines to the National Immunisation Program. Our broad portfolio includes vaccines to help protect against disease at all stages of life, from infants and children, to adolescent and adults, travellers, pregnant women and older adults.

Specialising in pain management, oral health and respiratory, our Consumer Healthcare brands – including Panadol, Voltaren and Otrivin are some of the best-known and well-trusted healthcare brands in Australia.

Special Presentation

Krystal De Napoli

Student, Monash University

Krystal De Napoli is a Kamilaroi woman from rural North-East Victoria undertaking an undergraduate degree in astrophysics at Monash University.

She is the first in her family to be attending university, and is researching the ways in which the love for her culture and her passion for science have historically intersected.

Krystal has been delivering a series of public talks on the topic of Indigenous Astronomy, presenting the knowledge gathered from Aboriginal and Torres Strait Islander elders, and researchers across Australia which describe the intimate, complex understanding our First Nations people had of the night's sky and its objects.

Krystal has featured at various events across the year, including being the opening speaker at the March for Science Melbourne event, the Astrolight Festival at Scienceworks, and the Riding the Lightwave in Technology dark-sky conference at Siding Springs Observatory.

In 2018 she is commencing a cadetship with the CSIRO's Data61 team with their mathematics division, and proceeding with her research into Muruwari Astronomy with Muruwari man, William Stevens, and key Indigenous astronomy academic, Dr Duane Hamacher.



Address by

Baroness Kate Rock

Member of the House of Lords, United Kingdom

She was appointed a Life Peer in 2015. She serves as member of the House of Lords Select Committee on the Rural Economy.

Baroness Kate Rock serves as Independent Non-Executive Director of Keller Group plc since September 01, 2018. She served as Vice-Chairman of the Conservative Party with responsibility for business engagement from 2015 to July 2016 and its Director of Business Engagement since 2008.

Baroness Rock was a partner at College Hill for 12 years from 1996, where she provided strategic counsel and business communication strategies to both public and private companies, including several technology businesses. She served at College Hill since 1996, where she provided strategic counsel and business communication strategies to both public and private companies, including several technology businesses.

Baroness Rock served as a Non-Executive Director at Imagination Technologies Group Plc since August 2014 until November 2017. From 2012 to January 2017, she served as a Non- Executive Director at education company, First News (UK) Limited. From 2017-2018 she was a member of the Select Committee on Artificial Intelligence.

She is a Non-executive Director of Real World Technologies Limited and Senior Adviser at Instinctif Partners.



STEM sidebyside

organisations
in attendance



inspiring
women



Australia Computer Society

Altus Traffic

ARRB Group

Australian Academy of
Technology and Engineering

Barons Medical Consulting Pty Ltd

Bec Martin Consulting

Biopharma and Healthcare

Club Melbourne, Melbourne
Convention and Exhibition
Centre

Corporate Venturing, Australia

CPBJH Joint Venture

CSIRO

Deakin University

Deloitte

GlaxoSmithKline (GSK)

Globinium

GMT People

Hendry Group

Illumina

insium

Jacobs CH2M

Lueur Pty Ltd

Monash University

Murdoch Children's Research
Institute

Office of the Minister for
Innovation and the Digital Economy

OneGlobalVenture

Peter MacCallum Cancer Centre

ProductiveMS

RMIT University

Robogals

SVI Global

Tamu Innovations

The Social Science

The University of Melbourne

TRaM Program

Transdev Australasia

Tron Systems

Vic ICT For Women

Women in Science Parkville
Precinct

Work180



inspiring
women



British
Consulate-General
Melbourne



MONASH
University

inspiring women STEM sidebyside founding partners

Dr Rowan Brookes

Education Director, School of Biological Sciences, Monash University

Mr Chris Holtby OBE

British Consul General Melbourne, UK Government

Mrs Polly Holtby

Ms Julia L Page

MD and chief executive, veski

STEM sidebyside founding partner biographies

Ms Polly Holtby

After completing a BSc(Hons) in Chemistry with Industrial Experience at Manchester University, including a year-long industrial placement with Dow Chemicals in Germany, Polly joined Procter and Gamble in Belgium, working in upstream product development in their Fabric & Homecare Division. She later moved to their Healthcare Division in the UK, managing both upstream product development and market delivery projects.

Following an extended career gap caring for her children and living in Belgium and the UK, Polly worked in financial management for Lighthouse Global, a London firm of management consultants, before moving to Estonia and then to Australia.

Polly enjoys community involvement to help her embed in each place she lives, and has held a range of roles such as President of the school Parents' Association and Treasurer of the International Women's Club of Estonia. She is now a co-founder of the STEM sidebyside program.

Ms Julia L Page MD and chief executive, veski

Ms Julia Page was appointed chief executive of **veski** in 2004 after a career spanning the public, private and philanthropic sectors in Australia and the United Kingdom.

As the head of **veski**, Julia leads a team responsible for the continued development and delivery of **veski's** programs focused on talent acquisition and support, global engagement and veski testbed activities.

Julia has taken an active lead in inspiring women across Victoria and around the country. In 2015, Julia was instrumental in the development of the inspiring women program including a series of booked out professional development activities and the inaugural veski inspiring women fellowships.

Julia relocated to Melbourne in 2000. She completed a Bachelor of Science in Information Business Systems Technology at the University of Essex, UK before beginning a career in IT sales and strategic planning.

Julia sits on the board of the St Vincent's Hospital Foundation, is a Member of the Australian Institute of Company Directors and former secretary to the Caulfield Racecourse Reserve Trust.

Julia joined the **veski** board of directors in March 2017.

STEM sidebyside founding partner biographies

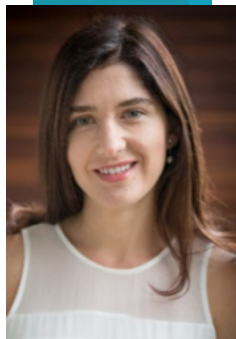
Dr Rowan Brookes Education Director, School of Biological Sciences Monash University

Dr Rowan Brookes is the Director of Education in the School of Biological Sciences at Monash University. Rowan has over a decade of experience teaching undergraduate science and leading educational change initiatives in the higher education and not-for-profit sectors.

She sits on the Women's Advisory Roundtable for the Minister for Jobs and Innovation and is the co-lead on the Women in STEM sidebyside program with **veski** and the British Consulate General Melbourne.

In 2016 she was the winner of the Telstra Business Women's Award (public service and academic).

Rowan is firm advocate for getting the most out of life and she balances her life by participating in endurance sports. Rowan shares her home on the glorious Mornington Peninsula with a crazy Collie dog, her dad, her three kids and very understanding husband.



Mr Chris Holtby, OBE British Consul General Melbourne UK Government

Chris took up the post of Consul General in Melbourne and Head of the UK Office for South Australia, Tasmania and Victoria in September 2016. Prior to this role, Chris was Her Majesty's Ambassador to the Republic of Estonia from January 2012.

From 2007 to 2011, he was Deputy Head of Security Policy Department in the UK Foreign and Commonwealth Office, responsible for UK policy on NATO, European Security, military and civil-military operations and co-operation, as well as maritime security.

From 2009 to 2011 he was the chairman of Working Group 1 of the international Contact Group on Piracy off the Coast of Somalia, leading work on operational co-ordination and regional capability development.

From 2002 to 2007, he was seconded to the European Union in Brussels as UK liaison officer to Javier Solana, the High Representative for Common Foreign and Security Policy, and policy adviser to Dr Solana on Asia/Pacific issues.



STEM sidebyside

financial
supporters



inspiring
women



Our thanks to the following organisations for their generous support of the series:



MONASH
University



illumina

Club Melbourne Ambassador Program - Melbourne Convention and Exhibition Centre (MCEC)

The Club Melbourne Ambassador Program is an invitation-only group of Victoria's elite thinkers and leaders, who work together to establish, secure and host international business events to promote our State's expertise around the world.

With the Governor of Victoria as Patron in Chief and the Premier of Victoria as Patron, Club Melbourne brings thought-leadership to Victoria which enhances our State's economic growth and global reputation.

International business events help to attract world leaders and decision makers, build new networks with international organisations, and provide unprecedented education and research opportunities for all Victorians.

Founded and led by Melbourne Convention and Exhibition Centre with collaboration and support from the Melbourne Convention Bureau and the Victorian State Government, the program has delivered 131 international conferences worth over \$840 million to become one of the world's most influential Ambassador Programs.

Thanks to this diverse group of highly educated, extremely skilled and incredibly passionate Ambassadors who voluntarily work together for the benefit of every Victorian, Club Melbourne is a unique collaboration that brings the world to our great city.

Proudly supported by venue partner :



**CLUB
MELBOURNE**

Founded by



**MELBOURNE
CONVENTION
EXHIBITION
CENTRE**



inspiring
women



British
Consulate-General
Melbourne



MONASH
University

inspiring women STEM sidebyside

Biographies:

- Masterclass & workshop facilitators
- Panelists
- Supporting Organisations

Laura Anderson | Chairman, SVI Global

Networking masterclass facilitator – Thursday, 31 May 2018

Laura has worked extensively across governments and industries locally and globally as a senior adviser on global governance, strategy transformation and risk optimisation. Her professional speciality has been in harnessing the power of big data and its effects on global supply chains, trade, investment and infrastructure development.

Laura is Chairman of SVI Global Pty Ltd, OneGlobalVenture Pty Ltd, LaunchVic and the Foundation for the Advancement of Science and Technology in Schools. Laura is on the Board of the Australian Grand Prix Corporation, Epworth HealthCare, the National Basketball League and the Defence Council Victoria. Laura is on the Board of the Fulbright Commission, American Australian Association, the Defence Science Institute and is a Director of several private investment companies.



Laura was honoured both as an Ambassador of International Women's Day on its 100th anniversary and as an Australia Day Ambassador and has supported the development and expansion of the Women of Influence program throughout schools locally and globally. She was honoured as a Fellow of the Chartered Institute of Transport for her contributions to industry and appointed as a Governor of the American Chamber of Commerce. Laura is emeritus Chair of the CEO Circle and immediate past Chairman of The Good Foundation (including Jamie Oliver's Ministry of Food) and the Melbourne Fashion Festival, one of the largest and most respected consumer fashion festivals in the world.

Laura continues to evolve as a global citizen - embracing health, education and economic development initiatives around the world. She is passionate about empowering the next generation, maximising women's potential and empowering comprehensive workforce participation. Laura is committed to the global development of the entrepreneurial ecosystem and backing the stars of tomorrow who just need the opportunity to shine.

Leading the Way: Networking Workshop mentors

Title	First Name	Last Name	Organisation
Mr	Matt	Gaffney	Enindico
Mrs	Chris	Holtby OBE	British Consulate General Melbourne
Ms	Caitlin	Iles	Capital XX
Ms	Julia	Page	veski MD and chief executive
Mrs	Siân	Slade	Biopharma
Professor	Tiffany	Walsh	veski director

Dina Pozzo | Founder and Director, insium pty ltd.

Leading Self with Courage workshop facilitator – Monday, 18 June 2018

Established in 2005, insium, named after the Italian verb “to dream”, conveys the ideas of hope, vision and inspiration; of wisdom and learning; and also of sharing stories, experiences and ideas. insium has succeeded in building strong and collaborative partnerships with its clients; working closely with them to clearly define and deliver on organisational priorities and strategies.

Dina’s purpose is to open doors; she invites you to step through these doorways with her and soak up the other side.



With more than twenty years’ experience in learning and organisational development both locally and internationally, Dina is a highly skilled facilitator, speaker and coach. Having recently completed a Master of Applied Positive Psychology from the University of Melbourne her keen interest in building the courage reserves of our leaders has been piqued.

Her natural enthusiasm and ability to quickly build relationships creates a shared learning journey of curiosity and discovery, challenge and encouragement. Whether through workshops, keynote speaking or coaching, Dina’s ultimate aim is to broaden minds and build skills, capability and confidence - empowering individuals to implement successful plans of action for sustainability and to have positive impact on organisational goals.

Dina has a passion for positive, generative approaches to leadership development, resulting in transformational shifts in performance and wellbeing for individuals, teams and organisations.

She prides herself on her client-centric approach, building and sustaining partnerships by working closely with clients to define and deliver on organisational priorities and strategies. Dina has worked with senior and executive business leaders, people managers, professionals and teams, and continues to partner with industries such as banking and finance, pharmaceuticals, medical technology, entertainment, engineering, biotechnology, hospitality, FMCG, manufacturing and not-for-profit.

Dina has recently returned from presenting insium’s “Leading with Courage” program at the 5th World Congress of Positive Psychology in Montreal.

dina@insium.com.au

@CourageChick

www.insium.com.au

www.leadingwithcourage.com.au

INSIUM

Michelle Gallaher | Co-Founder and Director, The Social Science

Social Media & Branding You masterclass facilitator
Thursday, 26 July 2018

LinkedIn and how it can work for you masterclass facilitator
Tuesday, 5 Sept 2018

A master networker in life sciences, business, government and the media, Michelle Gallaher is a living rolodex of names, faces and technologies in Australia. She is focused on helping public and private innovation-centric organisations understand how to influence to achieve outcomes using social and mainstream media, marketing and brand strategies coupled with relationship strategies targeted at government, investors, advocates, collaborators and users.



Previously the CEO of the largest geographic cluster of biotech and medtech in Australia, she is the co-founder of a new social media consultancy exclusively for the science and technology sector, called The Social Science and co-founder and director of Women in Science Australia, an advocacy organisation supporting women in STEM with more than 10,000 members.

For over 20 years Michelle has worked in numerous influencing and development roles in biotech, research organisations and the healthcare sector. She has held and continues to hold leadership roles in the Victorian science and medical research industry in universities and companies as a non-executive director, on various government advisory committees on life sciences and health and is a recognised champion of gender equity and diversity and the advancement of clinical trials in Australia. Renowned for loving a microphone and a soapbox, Michelle is an accomplished speaker, appearing at TEDx Melbourne and regularly on webinars, podcasts and the conference circuit.



michelle@thesocialscience.com.au

@StartupShelley

www.thesocialscience.com.au

Will Dayble | Founder, Fitzroy Academy **The Entrepreneur's guide to jumping ship** **workshop facilitator**

Will made his first dollar selling stolen lemons at age 6. The margins were incredible. His father taught him to code a year later.

His first successful exit was at 19 years old, from a small London-based IT training organisation. The resulting funds were used to start a mental health charity helping young people in the Melbourne punk scene, a web development company and a record label. All of these ventures eventually failed.

Later, Will founded one of Melbourne's leading digital agencies, a cafe, and an online social impact school.

Unprofessionally speaking, he's crowdfunded an international DJ tour, built a speaker diversity initiative, a charity evaluation startup, worked with internet criminals and filled a warehouse loft with 10,000 balloons.

Despite a complete lack of qualifications, he's an award winning lecturer, building courses on digital and entrepreneurship at two leading Australian universities.

As, investor advisor and occasional chair, Will sits on the board of a handful of Australian businesses.

By day, Will flies around the world making flappy noises with his lips to motivate large groups of people to do things, which is a tremendously strange thing to do if you think about it.

He lives in Melbourne, with a neuroscientist and two cats. In his spare time, Will doesn't have any.



Madeleine McManus OAM **Director of Industry Engagement, Monash University** **Getting on a board workshop facilitator**

The Director of Industry Engagement for the Faculty of Engineering and the Faculty of IT at Monash University, Madeleine McManus has been awarded the Medal of the Order of Australia for service to Engineering, and to Education. The award was announced by Governor-General Sir Peter Cosgrove at the Queen's Birthday Honours on the 12 June 2017.

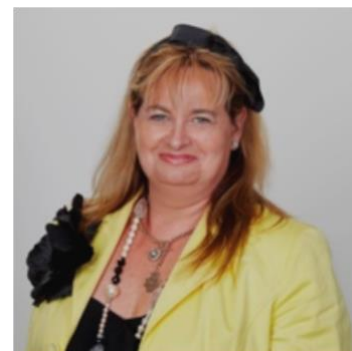
Madeleine is a Fellow of Engineers Australia and the first female Chairman of Engineers Australia (Victoria).

She serves on a number of industry and community boards, including the Victorian Advanced Manufacturing Advisory Council, Member National Advisory Board Women in Science and Chairman of the Victorian Branch, Chartered Institute of Logistics and Transport. She has spent a number of years in the commercial and project engineering environment working in industries such as chemical, industrial, and oil and gas both in Australia and overseas.

She assists organisations wishing to engage with Monash University, including the Monash Industry Partnership Program and the Monash Industry Team Initiative (MITI). As a member of the Joint Bushfire Response Taskforce, she was actively involved in the rebuild of bushfire-affected areas in 2009.

Madeleine is passionate about working with engineers of the future, raising the profile of engineers in the wider community and ensuring the long-term success of the profession.

She holds a double degree in Engineering and Commerce from Monash University and was a finalist in the Public Sector and Academia Award and Telstra Victorian Business Women's Awards in 2016.



Pathways to Entrepreneurship

panel discussion – Thursday, 26 July 2018

Ms Elpis Barons Founder and Director, Barons Medical Consulting Pty Ltd

Ms Barons has played an active role in the Australian and US MedTech industry, supporting, mentoring and providing advisory services. Ms Barons holds advisory board and mentorship positions with Monash University and CSIRO, BMTF Industry Advisory Board, RMIT Activator, Industry Advisory Board, La Trobe Accelerator, AusIndustry Expert Network, Director, Health Delivered (Digital Health early stage company).

Ms Barons engages at the pre-clinical stages supporting the development of the business concept, clinical investigational plans, relationship building and potential trial site qualification, as well as traditional management and implementation of clinical studies.

From February 2016 through to December 2017, Elpis Barons was the CEO of the Trajan Accelerator, responsible for identifying early stage enterprises suitable for investment by Trajan Scientific and Medical.

Her background in cardiovascular research (atherosclerosis) was been invaluable throughout her commercial career in medical device start-ups. Ms Barons served in the senior roles of Product Development of Emerging Technologies, Marketing and Sales Directorships in an international capacity, including MedNova (Galway, Ireland), a medical device start up with a novel interventional cardiology/radiology device which was acquired by Abbott Laboratories in 2001.



Ms Angeline Achariya Chief Executive Officer, Food Innovation Centre, Monash University

Angeline has more than 20 years of diverse international innovation and leadership experience in blue chip multinational companies like Masterfoods Japan, Fonterra, Yum! Brands and Mondelez International.

Angeline has led cross-functional teams across innovation, strategy development, market expansion and R&D execution. Her leadership has resulted in over 800 innovations launched across grocery and quick service restaurants in markets such as Japan, China, Thailand, New Zealand and Australia.

Angeline is on a number of advisory boards and committees and most noteworthy is the development of Victoria's Food & Fibre strategy in 2015. Angeline's strong commercial and innovation skills have paved the way for her leading and establishing a world first industry shared model, the Mondelez International Food Innovation Centre (FIC). The FIC has transitioned to Monash University in 2016 as a neutral industry shared innovation services start up to support the growth and revitalisation of the Australian food and beverage industry.



Ms Georgia Beattie Founder, Corporate Venturing Australia

Georgia began her career studying entrepreneurship at Babson College, Boston and RMIT, Melbourne. Shortly after finishing her University degrees, Georgia raised seed capital to found wine startup Lupé Wines in 2011. Lupé Wines specialised in supplying events, airlines and hotel minibars with the world's first single serve glass of wine designed for ease of use. The company expanded quickly across Australia, Japan, Korea, Taiwan and China. Lupé was listed as top 10 startups to watch by BRW and Georgia was listed as Top 50 Entrepreneurs to watch in 2015. Georgia was a key note speaker on entrepreneurship at the 2015 G20 Summit in Turkey. In 2016 the company was successfully sold.

Georgia took on the CEO role at Startup Victoria from 2016-2018 to help organise the startup ecosystem from her experience as an Australia entrepreneur. Startup Victoria is the go-to independent startup body for Victoria that focuses on creating more founders and better founders.

Georgia lasted 4 months in the corporate world before founding advisory firm Corporate Venturing Australia. This was driven by her experience of corporate venturing within Australian listed companies and the opportunities to create a better landscape for innovation.

Georgia is also a board member of Second Bite, Expert Advisory Member for the Australian Federal Government Accelerating Commercialisation Programme, an advisory board member of Law Squared, an advisory board member of Silicon Block and an advisory board member of Pride Cup.



Pathways from Academia to Industry

panel discussion – Thursday, 26 July 2018

Mrs Siân Slade Strategic Business Consultant, Biopharma and Healthcare

Mrs Siân Slade is a dynamic innovator and problem solver, with a key focus on quality use of medicines and a passionate interest in data connectivity to enable and expedite more impactful outcomes for patients.

A pharmacist by background, Siân has an MBA from Imperial College (London) and is a Graduate of the Australian Institute of Company Directors. Siân has worked internationally with a variety of roles of increasing seniority at market, regional and global levels including roles in Europe, Asia Pacific, US and the Intercontinental region.

Siân's experience spans clinical development, medical affairs, sales, marketing and human resources and has included working in fast-moving therapeutic arenas of HIV, HCV and Oncology, leading Marketing Excellence for Europe Middle East & Africa as well as more recently leading global capabilities for knowledge management & content development within Bristol-Myers Squibb.



Mr Craig Humphries Head of Operations, Hendry Group

Craig brings significant operational experience to Hendry Group having lead large dispersed teams within both the public and private sectors. Craig has a wealth of knowledge that has developed during his career, starting with an industrial maintenance background before progressing through to senior management roles. Craig has a proven record in significant business transformation and portfolio management across local, state, national and Australia / New Zealand portfolios. He has been employed, or managed contracts in roles across a diverse portfolio of sectors including PPPs, Industrial, Commercial, Aviation, Research, Health, Infrastructure, Retail, Justice / Correctional Institutes and Local Government.



Craig provides engaging and informing commentary in facilitating and participating on panel discussions. Craig's areas of special expertise are; management and leadership, Facilities Management – Compliance and Regulations, and Operations of the Future – How tech plays into the role of an Operations Manager today.

Dr Rebecca Tunstall Head of Study Management, GSK

Dr Rebecca Tunstall is the Head of Study Management at GSK Australia where she oversees the management of clinical trials being conducted in Australia. Rebecca and her team support the development of a range of products in various therapy areas including respiratory, infectious diseases, HIV, oncology, haematology and respiratory.

Rebecca began her career in academia and following completion of a postdoctoral position in Canada returned to Australia to join the pharmaceutical industry. Rebecca has 12 years of experience in the pharmaceutical industry in a variety of roles within clinical research and has also held scientific advisor and medical science liaison roles within medical affairs. Rebecca has broad experience in supporting the clinical development of a range of assets in various therapeutic areas from phase 1 trials through to product launch.



Marguerite Evans-Galea | Executive Director - IMNIS

Australian Academy of Technology and Engineering

Mentoring and Sponsorship workshop facilitator – Thursday, 16 August 2018

Dr Marguerite Evans-Galea is a scientist, executive and entrepreneur. She is the Executive Director of the Industry Mentoring Network in STEM (IMNIS) with the Australian Academy of Technology and Engineering, and co-founder and CEO of Women in STEMM Australia.



Dr Evans-Galea has led research programs in cell and gene therapy at world-leading organisations in the United States and Australia. Her research and leadership have been internationally recognised with numerous awards. Strongly committed to empowering the next generation, Dr Evans-Galea actively mentors STEMM students and professionals in the non-profit, public and private sectors.

An internationally recognised advocate for equality and equity, Dr Evans-Galea serves on the Science in Australia Gender Equity Expert Advisory Group and the inaugural Ministerial Council for Women's Equality in Victoria. She is an Ambassador for the Victorian Honour Roll of Women and the Scienceworks Museum. Dr Evans-Galea has also represented Australia at Asia-Pacific Economic Cooperation meetings.

Championing STEMM research, education and innovation, Dr Evans-Galea has served with advisory groups in State and Federal governments, and communicates regularly on a range of STEMM-related topics via social and mainstream media.

marguerite.galea@imnis.org.au

@MVEG001

@WomenSciAust

@_IMNIS

www.imnis.org.au

<https://womeninscienceaust.org/>

Leonie Walsh | Director and Founder, ProductiveMS

inspiring women Trailblazer – Thursday, 16 August 2018

Leonie Walsh is a leader and adviser in technological innovation with more than 30 years of experience both locally and internationally across a diverse range of industries and applications.



Leonie's career has bridged across Industry, Government and academia with a recent role as the inaugural Lead Scientist for the

Victorian Government from 2013 to 2016 with a focus on innovation efficiency, technology commercialisation and the future skilled workforce.

Leonie's most recent focus has been in the renewable energy sector with roles including the Chair of the Interim Board for the Centre for New Energy Technologies, Chair of the Expert Advisory Panel for the Victorian Government's New Energy jobs fund and Battery Storage Initiative and Governance Chair of the Renewable Certificates Purchasing Initiative.

An additional area of interest for Leonie is in blood cancer support services through her Chair role with the Fight Cancer Foundation, Board roles on the Worldwide Network of Blood and Marrow Transplantation and the Australian Bone Marrow Donor Register.

Leonie is a Fellow of the Australian Academy of Technology and Engineering, has received an honorary doctorate in 2014 for her contributions to Science and Innovation and became the Inaugural Ambassador for Women in STEMM Australia in 2016.

The Art of Negotiation

panel discussion – Tuesday, 4 September 2018

Samantha Ludolf | Deputy Director, Strategy and Operations Walter and Eliza Hall Institute

In her role as the Walter and Eliza Hall Institute's Deputy Director, Strategy and Operations, Sam supports the Institute's researchers to maximise the time they can spend on their science and to maximise funding for research. Sam leads the Professional Services team, encompassing Business Development, Finance, Procurement & Logistics, People and Culture, Information Technology Services, Communications and Marketing, Facilities, Grants and Laboratory Operations.



Sam has lead exciting initiatives such as the monetisation process of Venetoclax, the development of on-site childcare, engagement with State Government on indirect cost funding to name a few.

Sam has extensive international and national experience in a range of industries including government, health, justice and business innovation. She has a proven track record of strategy development based on innovative solutions for complex environments and successful implementation and execution.

Sam is committed to gender equality and supporting women in the workplace. She is values driven and committed to making a difference for the public good, and is passionate about supporting health and medical research to be a forefront in Australia.

Jane Ryan | deputy chair, veski

Jane was appointed to the **veski** board in 2013 and is currently the deputy chair of the **veski** board of directors.

Jane has significant experience in the pharmaceutical and biotechnology industries and is currently consulting to technology companies for the development of growth strategies.



Jane's international experience includes Roche and Columbia University (US); and Peptech and Cambridge Antibody Technology (UK) where she managed research and development programs. In Australia, Jane worked with Peptech and Biota Holdings Ltd in senior roles in research and development, commercialisation, business development and alliance management. At Biota, as Vice President, Product Development & Strategic Marketing, Jane oversaw the development of products for disease treatment and prevention.

Jane has led many fundraising campaigns including the awarding of a US Government contract for \$230m to develop a treatment for influenza.

She is currently a member of the boards of TechInSA, Kayban and Technologies Development Investment as well as Chair Advisory Board, iThree Institute UTS, Sydney.

Chris Holtby OBE | British Consul General Melbourne UK Government

Rowan Brookes | Eduation Director, Monash University Panel facilitator

Michelle Sales | Speaker, Coach, Trainer

Having those difficult conversations workshop facilitator - Tuesday, 4 Sept 2018

Michelle Sales is passionate about helping people tap into their true potential – in leadership and in life.

As one of Australia's leading experts in leadership development and executive coaching, she is a highly sought-after speaker, trainer, facilitator and coach. Michelle has helped thousands of senior leaders and their teams learn to show up as the best version of themselves, to build their confidence and influence with others, and to maximise their leadership and organisational performance.



Michelle works with a warm, collaborative style, and with a strong commitment for results. Throughout her executive career Michelle has gained valuable commercial experience, this together with her professional coach practice brings a particularly unique mix of skills to her coaching and leadership consulting. She has worked with some of Australia's most respected businesses, including ANZ, NAB, Telstra, Australia Post, Department of Defence, AFL and Tennis Australia.

Michelle is a graduate from the Harvard Kennedy School, Executive Education in the Art and Practice of Leadership Development as well as Women and Power – Leadership in a New World. She holds a Bachelor of Business – Accounting and a Graduate Certificate in Human Resource Management and is an Erickson Professional Coach (EPC) with Erickson College, Vancouver, Canada. She is currently studying Positive Psychology.

Michelle is accredited to administer Hogan Lead series, HBDI®, Strengths Profile, DiSC, Immunity to Change and Global Leadership Wellbeing Survey (GLWS). She is a Graduate of Australian Institute of Company Directors.



michelle@michellesales.com.au

@michelleksales

<https://michellesales.com.au/>

Amanda Selleck | Talent Acquisition Project Manager Transdev Australasia Pty Ltd

Mastering video to excel your career workshop facilitator Tuesday, 16 Oct 2018

A Masters qualified Human Resource professional Amanda has been working in the field for over 8 years. Amanda quickly found a love for all things Talent Management. She has worked in various roles consulting and supporting top 100 ASX listed companies to ensure their talent attraction and recruitment campaigns are at the forefront of the business.

Over the years Amanda has become a specialist in the volume based recruitment space and most recently started looking after Graduate Programs end to end. Amanda's current role sees her work for a global public transport operator, Transdev. In this role she enjoys helping young talent develop and take the next step in their career whilst playing a major role in the Diversity and Inclusion initiatives of the organisation.



Transdev believe public transport plays an important part in how a city comes to life. Our day to day work influences our families, friends and future generations where they live, work and play. With a global network of 83,000 colleagues in 19 countries, our customer and client focus, commitment to innovation and provision of safe travel lies at the heart of In Australasia, which covers Australia and New Zealand, we have 5,704 people who are passionate about operating our 2,150 vehicles and vessels which deliver more than 145 million customer journeys each year. We operate a range of transport modes including bus, train, light rail, on-demand and ferry.



inspiring
women



British
Consulate-General
Melbourne



MONASH
University

supporting organisations

Australian National Fabrication
Facility (ANFF)

Barons Medical Consulting
Pty Ltd

BioCurate Pty Ltd

Biopharma and Healthcare

Bosch Australia

Club Melbourne, Melbourne
Convention and Exhibition
Centre (MCEC)

Corporate Venturing Australia

Commonwealth Scientific
and Industrial Research
Organisation (CSIRO)

Enindico

Engineers Australia

Ernst & Young (EY)

Fitzroy Academy

GlaxoSmithKline (GSK)

Hendry Group

Illumina

KPMG

Machinam

MITI, Monash University

Monash Food Innovation Centre

Monash Generator

Office of the Minister for
Innovation and the Digital
Economy

Pfizer

RMIT Activator

The Social Science

TRaM Program,
The University of Melbourne

VIC ICT for Women

WADE Institute of
Entrepreneurship

inspiring women STEM sidebyside

Leading the Way participants

Dr Beth Allison
Dr Victoria Blair
Dr Jessica Borger
Dr Danielle Burns
Dr Nolene Byrne
Dr Sarah Dunstan
Dr Bernadette Fitzgibbon
Dr Jennifer Flegg
Dr Anne Fletcher
Dr Kate Fox
Ms Veronica Glattauer
Dr Caroline Gurvich
Dr Sarah Hanieh
Dr Natalie Hannan
Dr Karla Helbig

Dr Jessica Holien
Ms Kristen Howard
Dr Karyn Jarvis
Dr Maria Liaskos
Assoc Prof Brigid Lynch
Dr Eliana Marino Moreno
Dr Tich-Lam Nguyen
Dr Jess Nithianantharajah
Dr Carmel O'Brien
Assoc Prof Jenny Pringle
Dr Diana Stojanovski
Ms Rebecca Tilbrook
Dr Lara Wakeling
Dr Renée Webster
Dr Angela Ziebell



Dr Beth Allison
Senior Postdoctoral Scientist
Hudson Institute of Medical Research

Dr Beth Allison is a vascular physiologist with a background in fetal physiology aiming to characterise physiology of sub-optimal pregnancies. After completing her PhD in 2008 she completed postdoctoral training at the University of Cambridge and Monash University. To date, she has published 51 articles and 2 book chapters, with a current H-index of 21 and >1100 citations.

Beth has obtained funding totalling >\$2.2M and been awarded eleven competitive research awards totalling >\$27,000. Dr Allison has expertise in physiological recordings in chronically instrumented fetal sheep as well as in vitro techniques such as wire myography and Langendorff.



Dr Victoria Blair
Research Fellow
Monash University

Dr Victoria Blair received her PhD in 2010 from the University of Strathclyde in Glasgow under the supervision of Prof. Robert Mulvey. Following this, she undertook a joint industry/academic postdoctoral position with Pfizer in Kent, England.

In 2011 she relocated to Melbourne to begin an ARC funded postdoctoral fellowship working with Prof. Phil Andrews at Monash University. In 2014 she was awarded an ARC DECRA fellowship to begin her independent research career. In 2016 she was awarded an ARC DP (CI) and currently works as a lecturer in inorganic/organometallic chemistry at Monash University.



Dr Jessica Borger
Postdoctoral Research Fellow
Monash University

Dr Jessica Borger is a T cell immunologist and Postdoctoral Research Fellow. She was awarded a prestigious Medical Research Council PhD at the National Institute of Medical Research (UCL) where her interests were founded in addressing the early events that direct T cell development, activation and function, research. Her current research focus investigates chronic lung disorders.

Jessica serves as a member on the AMREP EMCR committee at Alfred Health and the International Day of Immunology committee. She is a coordinator for STEM professionals in Schools (CSIRO) and presents at STEM public lectures for students and International Women's Day events.

Dr Danielle Burns
Senior Associate
FB Rice



Dr Danielle Burns is an Australian and New Zealand registered patent attorney. Danielle prepares and prosecutes patent applications throughout the world; provides patentability, infringement, clearance, and validity opinions; conducts opposition and due diligence work, with a specialty in biopharmaceuticals (including antibodies), diagnostics and agriculture.

Danielle works with a number of local and overseas biotech companies, including SMEs, big pharma and generics as well as academic institutions to protect their intellectual property and help them avoid infringing competitor's intellectual property rights. She completed a BSc (Hons) and a PhD (Immunology) at the University of Melbourne, before working as a postdoctoral scientist at BIO21.

Dr Nolene Byrne
Senior Lecturer
Deakin University



Dr Nolene Byrne is a Senior Lecturer at Deakin University with a joint position within the School of Engineering and the Institute for Frontier Materials. Nolene's research interests center around understanding process/structure/property relationships in polymers. She leads the polymer research theme within the Energy Pipelines CRC and is CI in the ARC Research Hub for Future Fibres.

Current projects include, converting waste into value added products, textile recycling and regeneration, renewable functional materials, modelling plastic pipe lifetime and understanding degradation. Current teaching responsibilities 1st year materials engineering and 3rd year manufacturing.

Dr Sarah Dunstan
Senior Research Fellow
The University of Melbourne



Dr Sarah Dunstan is a Senior Research Fellow. Sarah uses genomics to understand the host-pathogen interaction in globally important infectious diseases. She completed her PhD at the University of Melbourne in 1998, then a postdoctoral fellowship at Imperial College, London.

In 2001, Sarah joined Oxford University Clinical Research Unit, Vietnam and developed a program of research on enteric fever, tuberculosis and malaria. In 2013, Sarah returned to The University of Melbourne and has expanded her human genomics research to include pathogen genomics. For the Doherty Institute, Sarah is implementing a strategy to facilitate multi-disciplinary clinical research to enhance its impact.



Dr Bernadette Fitzgibbon
Senior Research Fellow
Monash University

Dr Bernadette Fitzgibbon is a Senior Research Fellow at Monash University where she heads the Pain and Affective Neuroscience Unit at Monash Alfred Psychiatry research centre. She currently holds a National Health and Medical Research Early Career Fellowship to undertake her research on the neurobiology of pain experience and the development of neurotechnology approaches for pain syndromes.

Bernadette is also an executive member of the Australian Brain Alliance and the chair of the EMCR Brain Science Network, an initiative of the Australian Academy of Sciences and the Australian Brain Alliance.



Dr Jennifer Flegg
Senior Lecturer
The University of Melbourne

Dr Jennifer Flegg is a Senior Lecturer and DECRA fellow in the School of Mathematics and Statistics at The University of Melbourne. Her research focuses on mathematical biology in areas such as wound healing, tumour growth and infectious diseases. Jennifer was awarded a PhD in 2009 from Queensland University of Technology on mathematical modelling of tissue repair.

From 2010 – 2013, she was at the University of Oxford developing statistical models for the spread of antimalarial drug resistance. She was a Lecturer at Monash University (2014-2017) before joining The University of Melbourne in May 2017.



Dr Anne Fletcher
Senior Research Fellow
Monash University @ImmunologyMelb

Dr Anne Fletcher is co-head of the Stromal Immunology Laboratory at Monash University. Her work explores how structural cells, called fibroblasts, take control of the immune response in health and in diseases, from autoimmunity to cancer. Anne completed her PhD at Monash University, before undertaking postdoctoral training at Harvard Medical School, Boston, under a CJ Martin Fellowship from NHMRC Australia. She was then awarded a Birmingham Fellowship to start a laboratory at the University of Birmingham.

Anne returned to Monash in 2017, and is currently working with clinical and biotechnology partners to develop new therapies that she believes will change lives.

Dr Kate fox
Senior Lecturer
RMIT University



Dr Kate Fox is a biomedical engineer with a focus on the design and development of 3D printed hybrid materials for medical implants. Kate is a senior lecturer at RMIT after spending time as a research fellow at The University of Melbourne (Bionic Eye Project, 2010-14). Prior to this she worked at UniSA and in private entities.

Kate has a PhD (2006) in orthopaedic implant materials (Ian Wark Research Institute, University of South Australia) focused on the development of a hybrid titanium biomaterial (sponsored by Portland Orthopaedics). Kate is an inventor on 3 granted patents and has worked on media-relevant projects with great success.

Ms Veronica Glattauer
Team Leader, Senior Research Scientist
CSIRO



Veronica Glattauer is a Team Leader in the Biomedical Program at CSIRO Manufacturing Business unit. Her research activities are in the area of cell material Interactions with current emphasis on new material platforms for biomedical applications. Her project activities have involved a large number of commercially driven partnerships with industry, Australian and overseas companies.

She provides biocompatibility expertise in the Biomedical Materials Translational Facility at CSIRO. She has received Team awards including two CSIRO medals for Research Achievements. She is a Committee member of the Australasian Society for Biomaterials and Tissue Engineering.

Dr Caroline Gurvich
Senior Research Fellow
Monash University



Dr Caroline Gurvich is a Senior Research Fellow and Clinical Neuropsychologist at Monash Alfred Psychiatry research centre. She is the Deputy Director of the Women's Mental Health Division and Head of the Cognitive Neurosciences Unit. Caroline's research seeks to better understand cognitive functioning in mental health and mental illness, through investigation of biological factors (such as hormones and genes) and psychological factors (such as life trauma and stress).

Caroline dedicates time to supervising staff, PhD and honours students as well as mentoring junior post-doctoral STEM researchers. She is passionate about gender equity, diversity and inclusion in the area of STEM.



Dr Sarah Hanieh
Postdoctoral Research Fellow
Doherty Institute, The University of Melbourne

Dr Sarah Hanieh is an NHMRC Early Career Research Fellow at the Doherty Institute, The University of Melbourne. Sarah has worked in maternal and child health for over 16 years in a clinical, research and policy capacity in Nepal, Papua New Guinea, Liberia, South America, Ethiopia and Vietnam, as well as in Australian Aboriginal communities.

Sarah was awarded both the Chancellors Prize and Dean's Award for Excellence in a PhD thesis. Her current research focuses on developing a predictive algorithm to identify infants at high risk of stunting in resource-constrained settings, and investigating the link between the gut microbiome and child undernutrition.



Dr Natalie Hannan
Senior Research Fellow & veski inspiring women fellow
The University of Melbourne

Dr Natalie Hannan, PhD, is a NHMRC CDF1 Fellow at The University of Melbourne. She leads the dynamic Therapeutics Discovery Group, dedicated toward the development of novel therapies for serious pregnancy complications, with a clear focus on translation. She has over 70 peer-reviewed publications and has obtained almost \$6.5 million in research funding.

She is the current president of the Australian New Zealand Placental Research Association. In 2015 she was awarded a highly competitive **veski** inspiring women fellowship and in 2010 a Young Tall Poppy Award. She is a passionate science communicator and a staunch ambassador for Women in STEM.



Dr Karla Helbig
Senior Research Academic and Group Leader
La Trobe University @HelbigLab

Dr Helbig gained her PhD from the University of Adelaide in 2003, and started her career in virology research as an NHMRC early career fellow at the Royal Adelaide Hospital.

She now holds an academic position at La Trobe University where she heads the anti-viral innate immunity laboratory, examining the host response to viral infection.

Dr Jessica Holien
Head Drug Discovery
St Vincent's Institute of Medical Research



Dr Jessica Holien completed her doctoral studies at MIPS using a Medicinal Chemistry approach to drug exploration. Her project was multidisciplinary, consisting of computational modelling, chemical synthesis and biological assays. Since completing a PhD, Jessica has completed postdoctoral work at commercial entities (Biota, CRC Ctx) and in academia.

Jessica has been the recipient of a Cure Cancer/Leukaemia Foundation Postdoctoral Fellowship and is currently a 5-point Foundation Christine Martin Fellow at St Vincent's Institute. Her expertise is predominately using computational molecular modelling techniques for drug discovery. She has a particular interest in translatable science, having completed Graduate Certificate In Commercialising Research and the Bridge Program.

Ms Kristen Howard
Principal Civil Engineer
AECOM



Kristen Howard is a Civil Engineer with more than 15 years of experience in the utility, energy and urban development sectors. She works closely with government agencies and private sector clients to develop more environmentally sustainable outcomes for projects.

Born and raised in the United States, Kristen attended the University of Cincinnati before relocating to Canberra, and most recently, to Melbourne. She is passionate about mentoring the next generation of engineers and making opportunities in STEMM more accessible to young women.

Kristen is an avid ice hockey fan, loves games of trivia, enjoys travelling, and takes pride in creating the perfect macaron.

Dr Karyn Jarvis
Research Engineer
Swinburne University of Technology



Dr Karyn Jarvis is a research engineer at the Swinburne University of Technology, managing their Australian National Fabrication Facility (ANFF-Vic) Biointerface Engineering Hub. She has previously held postdoctoral appointments at the University of South Australia and the Australian Nuclear Science and Technology Organisation.

In her current role, Karyn is responsible for managing a suite of thin film deposition and characterisation tools which involves training users, conducting research that supports the hub, working on industry projects and promoting the hub. Karyn is passionate about improving university/industry research relationships.



Dr Maria Liaskos

Senior Lecturer, Laboratory Head & veski inspiring women fellow
La Trobe University

Dr Maria Liaskos is a **veski** inspiring women fellow and Laboratory Head at La Trobe University, and also the Deputy Director of the La Trobe Research Centre for Extracellular Vesicles. Her research focuses on understanding the cellular and molecular mechanisms of host-pathogen interactions with particular focus on *Helicobacter pylori* and bacterial membrane vesicles.

Maria completed her PhD at The University of Melbourne and undertook postdoctoral studies at Monash University and at the Hudson Institute of Medical Research. Maria has been awarded multiple awards including the International Milstein Young investigator Award (2014), and a Victorian Young Tall Poppy Award (2016).

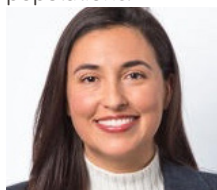


Associate Professor Brigid Lynch

Principal Fellow
Cancer Council Victoria

Associate Professor Brigid Lynch (PhD 2008, The University of Queensland) is a Principal Fellow in the Cancer Epidemiology and Intelligence Division at Cancer Council Victoria, and Honorary Principal Fellow in the Centre for Epidemiology and Biostatistics, The University of Melbourne.

Brigid's work focusses on how physical activity and sedentary behaviour are associated with cancer risk, biological mechanisms underlying risk, and health outcomes for cancer survivors. Her team is currently focussed on applying causal inference methods to epidemiological studies of physical activity and sedentary behaviour; using text mining platforms for mechanism discovery; and implementing behaviour change trials in clinical (cancer) populations.



Dr Eliana Marino

Head of Immunology and Diabetes Research Group
Monash University

Dr Eliana Marino is the head of the Immunology and Diabetes Research Group at Monash University. She completed her PhD from New South Wales University in 2010, and over the last seven years, her research has focused on the field of nutrition, immune-metabolism, and gut microbiota.

Eliana has been awarded with a Career Development Award from JDRF and with the distinguished Type 1 Millenium Award from Diabetes Australia. Her latest work has recently been published in the prestigious scientific journal *Nature Immunology*. She is currently investigating innovative dietary technologies that boost the good gut microbiota and modulate the immune system to tackle type 1 diabetes.

Dr Tich-Lam Nguyen
Chief Operating Officer
Monash University @NHTichLam



Dr Tich-Lam Nguyen is currently Chief Operating Officer for the ARC Centre of Excellence in Future Low-Energy Electronics Technologies, managing FLEET's operations and its business team. She is responsible for the Centre's financial and operational effectiveness and oversight of activities contributing to the development and delivery of its strategic goals.

Tich-Lam holds a PhD in Chemistry from RMIT University and a Master of Management from the Melbourne Business School. She has over 10 years experience in the higher education sector within a collaborative and cross-disciplinary environment as a research centre manager, a laboratory manager and a researcher in Nanoscience and Nanotechnology.

Dr Jess Nithianantharajah
Research Group Leader, Senior Research Fellow
The Florey Institute of Neuroscience and Mental Health @jess_nithi



Dr Jess Nithianantharajah is a Senior Research Fellow and heads a research team at the Florey Institute of Neuroscience and Mental Health. She completed her PhD at The University of Melbourne, then trained at the Howard Florey Institute in Melbourne, Wellcome Trust Sanger Institute, University of Cambridge and University of Edinburgh in the UK.

Jess returned to the Florey Institute in 2014 as an independent group leader. Her research uses novel technology she was involved in developing in the UK, which has revolutionised how we study cognition in animal models. Her work aims to understand how the connections between brain cells are important for mental processes such as learning, memory and attention and what happens when these functions become abnormal in brain disorders.

Dr Carmel O'Brien
Principal Research Scientist
CSIRO



Dr Carmel O'Brien is a senior scientist (CSIRO, Monash University adjunct) with extensive experience leading collaborative innovation research programs in the biotechnology, clinical and medical research sectors. She has >16yrs postdoctoral experience specialising in the development of stem cell technologies, with the derivation of Australia's first human embryonic stem cell lines for global research distribution being a key achievement.

Carmel's key interest is to achieve accessible healthcare advances through the growth of Australian industry-partnered disruptive technology programs. She is a passionate advocate for the STEM education pipeline and actively supports D&I initiatives seeking to bring greater diversity and STEM workforce impacts.



Associate Professor Jenny Pringle
Senior Research Fellow
Deakin University @JennyChem

Associate Professor Jenny Pringle is a Senior Research Fellow in the Institute for Frontier Materials at Deakin University and a chief investigator in the ARC Centre of Excellence for Electromaterials Science. She received her degree and PhD at The University of Edinburgh in Scotland before moving to Monash University in 2002.

From 2008-2012 she held an ARC QEII Fellowship, investigating the use of ionic electrolytes for dye-sensitized solar cells. Jenny moved to Deakin University in 2013. There she leads research into the development and use of ionic electrolytes for applications including thermal energy harvesting, CO₂ separation membranes and lithium batteries.



Dr Diana Stojanovski
Research Fellow/ Laboratory Head
The University of Melbourne

Dr Diana Stojanovski is a lab head in the Department of Biochemistry and Molecular Biology at The University of Melbourne. Her team researches the mechanisms that oversee protein import into human mitochondria. Diana obtained her PhD from La Trobe University in 2006 where she worked with Prof. Mike Ryan on the emerging topic of mitochondrial dynamics.

In 2006, she moved to the University of Freiburg as an Alexander von Humboldt Research Fellow and returned to La Trobe University in 2009 as an Australian postdoctoral fellow. In 2013 she was recruited to The University of Melbourne to start her independent research group.



Ms Rebecca Tilbrook
Director Large Programs
Monash University

Rebecca Tilbrook is a passionate renewable energy engineer with 15 years of international experience working in technical and management roles. In her current role as Director of Large Programs at Verdia, Rebecca leads the technical analysis and implementation of solar systems for Australia's top 250 energy users.

Prior to joining Verdia, Rebecca held positions within finance, consulting and government throughout Asia and the USA, providing specialised technical expertise on solar, wind, hydro, marine, storage and hydrogen technologies. In her spare time, Rebecca enjoys cooking and gardening with her fiancée, writing music, and campaigning for gender pay equality.

Dr Lara Wakeling
Senior Lecturer
Federation University Australia



Dr Lara Wakeling is a Senior Lecturer in the School of Health and Life Sciences at Federation University Australia, where she lectures in the areas of food and analytical chemistry, and scientific communication.

Lara holds an Honours degree in Chemistry, a Graduate Certificate of Education (Tertiary Teaching) and a PhD. Lara's research interests are strategic and applied, focussing on both learning and teaching and compositional changes in food. She has many published articles in international refereed journals and conference abstracts, both in her discipline area and related to the Scholarship of Learning and Teaching.

Dr Renée Webster
Research Chemist
Defence Science and Technology Group @reneewebs



Dr Renée Webster graduated with a Bachelor of Science with Honours in Chemistry from the University of Western Australia in 2005 and obtained a PhD from Monash University in 2017. Her PhD research focussed on the characterisation of trace oxygenated molecules in aviation and maritime fuels. She has professional experience in a range of chemistry disciplines including environmental, food, forensic and fuel science.

Renée is currently a research chemist at the Defence Science and Technology Group, specialising in the application of advanced chromatographic and spectrometric techniques to defence and national security.

Dr Angela Ziebell
Education Developer
Monash University



Dr Angela Ziebell has project and customer management experience working with industry, research institutes, government bodies and academia. This includes working with tens of thousands of samples, and successfully coordinating complex staffing needs and budgets.

Although originally trained as a synthetic chemist Angela's technical experience includes designing and optimising high throughput chemical and biochemical assays, biomass analysis, natural product isolation and structure determination, designing novel characterisation techniques for GMO plants, as well as organic synthesis. More recently, she has worked on curriculum design and linking industry with Universities to provide a better learning experience for the next generation of Australian scientists.

Stamina stream coach

Marian Gandy

Marian Gandy is a pharmaceutical executive with almost 30 years' experience. Her most recent role in the industry was Medical Director, Australia & New Zealand for Bristol-Myers Squibb Australia where she was instrumental in the launches of novel agents in immunology, oncology, and virology.

Marian is passionate about people development, organisational excellence and leading high performing teams. Initially qualified in clinical biochemistry, Marian held roles in a diverse range of therapy areas and corporate divisions including clinical research, medical affairs and sales and marketing, both as an individual contributor and increasingly as a team and people leader, before retiring in 2016.





inspiring
women



British
Consulate-General
Melbourne



MONASH
University

inspiring women STEM sidebyside

Stamina participants

Dr Emma Burrows
Dr Anna Figueiredo
Dr Caitlin Filby
Dr Sara Hely
Dr Kristen Stirling

Dr Elena Mashkina
Dr Annie McDougall
Dr Karyn Richardson
Dr Nisa Salim
Dr Nicole Van Bergen

tweet us
#STEMsidebyside
#veski
@veskiorg



Dr Emma Burrows
NHMRC-ARC Dementia Research Development Fellow
The Florey Institute of Neuroscience and Mental Health

Dr Emma Burrows is a NHMRC-ARC Dementia Research Development Fellow and leads a research program aiming to understand the neurobiology underlying cognitive disorders. Her research applies novel technologies to assess behavioural changes in transgenic mouse models with a focus on translation to the clinic.

Emma holds a number of leadership positions in the gender equity space and is a passionate science communicator, speaking for organisations such as School of Life, Pint of Science and Melbourne conversations, writing for print and tweeting @embws.



Dr Anna Figueiredo

Dr Anna Figueiredo seeks to facilitate knowledge transfer between industry and research organisations and the startup ecosystem to maximize the commercialization of new knowledge and technologies. In her more recent Business Development role at the Hudson Institute of Medical Research, Anna was involved in facilitating several commercial and academic licensing and collaboration opportunities, and assisted in establishing startup companies from the Institutes intellectual property. At Brandon Capital, she learnt about medical innovations through the Medical Research Commercialisation Fund. Anna entered the commercial sector from academia, and has worked with Thermo Fisher, Genera Biosystems and the global Startup Accelerator, MassChallenge. Her research background is in medical virology and she did a postdoctoral fellowship in the USA.



Dr Caitlin Filby
Senior Scientist/Research Assistant
Monash University

Dr Caitlin Filby has 4 years' post-doctoral experience in stem cell research. During postdoctoral studies (MCRI, WEHI) she used a broad range of skills to solve complex research questions. First to describe novel proteins in lung development and disease and among the first to profile changes in fetal lung gene expression.

Awarded several travel grants, Caitlin has presented her findings at international meetings (invited oral, oral as a PhD student). Awards include Justin Lowndes Postdoctoral Fellowship and Monash University Postgraduate Excellence Award. Returning from maternity leave, Caitlin is passionately committed to using her expertise to improve outcomes for women with endometriosis.

Dr Sara Hely
Manager

Regional Development Victoria @sarahely01

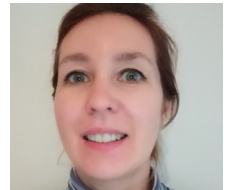


Dr Sara Hely is a scientist and senior manager with a background in agricultural research, development, food security, climate change, the rural industries, and innovation. The recipient of a Bureau of Rural Science, science and innovation award, Women's Leadership Victoria scholarship, Australian Rural Leadership Fellow, and Foundation for Young Australians award.

Sara advocates for diverse, next-generation agricultural scientists. Her research includes contemporary innovation models relating to science and complex problem solving. Skilled in agritechnology, big data and knowledge translation, and in developing and delivering strategy for rural industries. Sara was previously Company Director for the Birchip Cropping Group.

Dr Elena Mashkina
Research Fellow

Monash University @reneewebs



Dr Elena Mashkina is a physicist by training with multidisciplinary experience of statistical modelling of complex data and analytical techniques. She has an international experience in research and R&D, having previously worked in Germany, France, and the USA.

Elena moved to Australia in late 2009, to take up a position as Research Fellow at the School of Chemistry, Monash University. She is the mother of two children (born in 2011 and 2016). After the last maternity leave, she left academia and started freelancing as STEM educator in early learning centres and kindergartens.

Dr Annie McDougall
Postdoctoral Associate

Hudson Institute of Medical Research @mcdougall_annie



Dr Annie McDougall completed her PhD on fetal lung development in 2012. She is currently a postdoctoral researcher in the fetal and neonatal health group at the Ritchie Centre.

Her research focuses on combining an understanding of both the physiological and cell architectural/signalling changes underlying lung injury, to develop targeted therapies for improving outcomes for newborn babies. She combines various cutting-edge technologies, including clinically-relevant animal models of ventilation, live imaging of lung aeration and primary lung tissue cultures.

In 2015, she had her first child, taking leave from her research career, and is currently awaiting the birth of her second child.



Dr Karyn Richardson
Postdoctorate Researcher
Alfred Health @DrKarynR

Dr Karyn Richardson is a Post-Doctoral Researcher and General Psychologist at the Monash Alfred Psychiatry Research centre (MAPrc). Karyn is Team Coordinator of the Therapeutic Brain Stimulation division and oversees the Clinical Trials Research Program within this team. Her research interests include developing evidenced based neuropsychological interventions and brain stimulation treatments for the affective and cognitive changes following stroke.

Karyn is also driven by a desire to advocate for the transformational impact women can make in STEM.



Dr Nisa Salim
Alfred Deakin Post-Doctoral Research Fellow
Deakin University

Dr Nisa Salim received her PhD from Deakin University in 2013 on nanostructured polymer materials and joined Carbon Nexus as an a Research Fellow in 2014. Her research has been focused on next generation carbon fibres; porous carbon materials; and functional fibres.

Nisa won many awards as she advances her research career including AINSE Gold Medal, Smart Geelong Early Researcher award and SPE-ANZ Award. She has been awarded a number of prestigious fellowships including Victoria Fellowship and Endeavour Fellowship.

Dr Kristen Stirling
Senior Consultant
RM Consulting Group



Dr Kristen Stirling is a senior consultant at RMCG with 15 years experience working in agriculture and water. She began her research career with a PhD in plant physiology at the University of Tasmania. This has been complemented by 'in the field' experience providing research and industry development services for the horticulture industry in Western Australia.

Whilst consulting at RMCG Kristen has evaluated a range of government programs in the fields of horticulture, practice change and bushfire management. She also has extensive experience in stakeholder and community engagement, including consultation with irrigation communities on the Guide to the MDBA Plan.

Dr Nicole Van Bergen
Senior Research Officer
Murdoch Childrens Research Institute



Dr Nicole Van Bergen completed her PhD in 2012 at the Centre for Eye Research Australia (CERA). She spent several years at CERA researching whether mitochondrial impairments arise from specific gene mutations can lead to loss of a single neuronal population, the retinal ganglion cells. In 2016 she joined the Neurodevelopmental Genomic Research Unit at the Murdoch Childrens Research Institute (MCRI), Melbourne Australia, headed by Prof. John Christodoulou, a world-leader in Rett Syndrome (RTT) research.

At MCRI Nicole leads research into using stem cells to model CDKL5 disorder, a devastating neurodevelopmental disorder predominantly affecting females, for which there is currently no effective treatment. She also leads several research projects on rare genes associated with severe neurodevelopmental delay.

Notes



A series of horizontal dotted lines for writing notes.



inspiring
women



British
Consulate-General
Melbourne



MONASH
University

inspiring women STEM sidebyside

Empowering You participants

This exciting FREE opportunity supports female University students with their STEM studies and career ambitions through workshops and opportunities designed to empower with the skills, networks and mind-set to develop and achieve their career goals within STEM industries.

Empowering You welcomes female students who identify as being women or not, and male or intersex students who also identify as being women.

University students across Victorian institutions are encouraged to register to receive information about future events via:
www.veski.org.au/inspiring-women/Empowering-you

tweet us
#STEMsidebyside
#veski
@veskiorg

For details about **veski** visit veski.org.au



STEM sidebyside

tweet us
#STEMsidebyside
@veskiorg
#veski

veski is proudly
supported by
our founding partner

