



inspiring
women



British
Consulate-General
Melbourne



MONASH
University

STEM sidebyside

A celebration of Engineering and Women in STEM closing event

Melbourne Museum
11 Nicholson Street
18 November 2019

tweet us
#STEMsidebyside
#veski
@veskiorg



STEM sidebyside



**inspiring
women**



2019 program

The 2019 **veski** inspiring women **STEM sidebyside** program supports women in the STEM industries - led by **veski** and Monash University with the support of the British Consulate General Melbourne.

The **STEM sidebyside** program was officially launched track-side at the Formula 1® 2018 Rolex Australian Grand Prix by former Minister for Trade & Investment, Innovation & the Digital Economy, Small Business, Minister Philip Dalidakis MP on Thursday, 22 March.

The 2019 **STEM sidebyside** program has delivered program activities between June & November 2019 and included the following events, workshops and networking opportunities offering personal and professional development to STEM women at two differing career stages:

- **Leading the Way stream:** Mid-career emerging leaders
- **Stamina stream:** Women who want to, are about to, or have just returned to work

The dynamic 6 month program of workshops and networking opportunities is designed to empower women at different career stages with the skills, networks and mindset to develop and achieve their career goals within STEM (Science, Technology, Engineering and Mathematics) industries.

We are proud to have delivered the following sessions:

30 May

Welcome to be Inspired event & networking

3, 13, 24 June

Transition back to work after a career break workshop

15 July

Leading self with Courage workshop

12 August

Becoming an online influencer workshop

24 September

Embracing conflict and difficult conversations workshop

Panel discussion, Q&A and industry networking event

18 November

Closing event - A celebration of Engineering and Women in STEM

STEM sidebyside



**inspiring
women**



order of proceedings

Monday, 18 November 2019

Welcome

Dr Nurim Veis, Director - Research & Collections, Museums Victoria

Opening remarks

Ms Julia L Page, MD & chief executive, **veski**.

STEM sidebyside Founding Partner

Address by 2019 STEM sidebyside participant

Dr Lakshmi Wijeyewickrema, La Trobe University

Keynote presentation

Dr Jean Venables CBE, Past President, Institution of Civil Engineers, UK
Sustainability: How can engineers deal with the climate emergency?

Closing remarks

Mr Chris Holtby OBE, British Consul General Melbourne

STEM sidebyside Founding Partner

Certificate presentations

Associate Professor Kate Fox, 2018 **STEM sidebyside** participant,
Discipline Leader Biomedical Engineering, RMIT University

Networking

The **STEM sidebyside** program is designed to increase retention and cultivate a STEM women community through the development of strong relationships between academic institutions, industry and government, supported by professional development and networking opportunities by:

- Develop networking skills and build relevant peer-networks
- Develop business skills and attitudes to facilitate career progression
- Identify potential high-level mentors from industry
- Build awareness of career options across STEM

Keynote presentation

Dr Jean Venables CBE

Past President, Institution of Civil Engineers, UK



Jean Venables is a Fellow of the Royal Academy of Engineering, a Chartered Civil Engineer and member of the Chartered Institution of Water and Environmental Management, with an MSc in Public Health Engineering, and a long involvement in flood risk management, water and wastewater engineering, waste management, and water resources issues.

She is a consultant in flood risk management and water level management; a Director of Venables Consultancy and Chairman of Crane Environmental.

She is an elected member of the RNLI Council and a member of their Technical Committee. She is active on RAcad Eng and ICE committees. She is Chair of the Engineering and Environment Committee of WFEQ, the World Federation of Engineering Organisations. She is also a Council member of IESF and was President in 2018.

Recently she was Chief Executive (is now a Vice President) of the Association of Drainage Authorities; Chairman of the Customer Challenge Group for Sutton and East Surrey Water Company, a Non-Executive Director of HR Wallingford, Chairman of the Nuclear Liabilities Fund and Chair of Constructionarium.

Jean was President of the Institution of Civil Engineers in 2008-9. She was awarded a CBE in the 2010 Birthday Honours List for services to the civil engineering profession, an OBE in the 2004 New Year Honours List for services to flood defence and an MBE in the 1997 New Year Honours list for services to civil engineering. She was also honoured by the Institution of Civil Engineers with the award of the Garth Watson Medal in 2001 and has been elected to the Smeatonians. The Jean Venables Medal is awarded to the person with the highest performance at their ICE Professional Technician Review.

Speakers

Dr Nurin Veis

Director Research & Collections, Museums Victoria

Nurin Veis has expert knowledge of science and the scientific environment with an established reputation in audiences and public communication. In the role of General Manager she evolved Scienceworks as an innovator in inspiring STEM-based learning experiences for a broad audience of children, teens and adults.

She was instrumental in the development of benchmark science exhibitions for Melbourne Museum's Mind and Body Gallery with extensive experience in museum displays and ethics. Nurin has a background in biochemistry, immunology and cell biology, having worked as a medical researcher in both Melbourne and New York.

She is currently engaged in implementing innovative research and collecting initiatives at Museums Victoria bringing together multiple perspectives that range from Australia's First Peoples, natural sciences, technology, and contemporary history and museology.



Associate Professor Kate fox

Discipline Leader, Biomedical Engineering RMIT University

Associate Professor Kate Fox is a biomedical engineer with a focus on the design and development of 3D printed hybrid materials for medical implants. Kate is a senior lecturer at RMIT after spending time as a research fellow at The University of Melbourne (Bionic Eye Project, 2010-14). Prior to this she worked at UniSA and in private entities.

Kate has a PhD (2006) in orthopaedic implant materials (Ian Wark Research Institute, University of South Australia) focused on the development of a hybrid titanium biomaterial (sponsored by Portland Orthopaedics). Kate is an inventor on 3 granted patents and has worked on media-relevant projects with great success.

In 2019 she made Associate Professor and was promoted to Discipline Leader - Biomedical Engineering. Kate was also a recipient of a Victorian Tall Poppy award and selected as a Superstar of STEM, as well as receiving a Engineers Australia most innovative Engineer award.

Kate was selected to participate in the 2018 **veski** inspiring women **STEM** **sidebyside** program.



Other speakers biographies can be found within the booklet.

STEM sidebyside

closing event partners



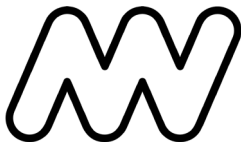
inspiring
women



British
Consulate-General
Melbourne



Department for
International Trade



ice
Institution of Civil Engineers

Museums Victoria

Business as unusual

Join MV Business+ to discover a new approach to corporate membership and business networking.

We believe old school memberships should have died out with the dinosaurs.

That's why we offer a corporate membership like no other.

Impress clients with exclusive exhibition previews and IMAX screenings, network under the stars at Melbourne Planetarium, or treat your colleagues to free museum visits and experiences. Our museum-inspired events and offerings are a step away from the daily grind, designed to give you a fresh approach to business.

Our membership has two tiers so you can pick what best suits your needs. Both include free general entry, branding opportunities, discounts and more.

By joining MV Business+ you'll also help us preserve more than 17 million objects and support new exhibitions and research activities.

<https://museums victoria.com.au/join-support/mvbusinessplus/>

STEM sidebyside

organisations in attendance



inspiring
women



AECOM Australia Pty Ltd

Arcadis

ARRB Group

Arup

Aurecon

Australian British Chamber of Commerce

Australian Computer Society

Australian Laboratory Services

Aus. Mathematical Sciences Institute

BBC International

BioCurate

BP

Bristol-Myers Squibb

British Consulate General, Melbourne

Burnet Institute

CSIRO

CSL Limited

Deakin University

Department for International Trade

EPA Victoria

FB Rice

Foreign & Commonwealth Office

Federation University

Geelong Manufacturing Council

Griffith Hack

Grimshaw

GSK Australia

Hendry Group

Hudson Institute of Medical Research

Humans Meet Digital

insium Pty Ltd

Invest Victoria

Jacobs

Just Be Nice Project

La Trobe University

Lueur Consulting

Magellan Stem Cells P/L

Marilyn Careers

MDRC

Melbourne Defence Enterprise

STEM sidebyside

organisations in attendance



inspiring
women



Middleton Group Engineering

Monash University

Museums Victoria

NAB

Office of the Lead Scientist

OpenExO

PageGroup

Peter MacCallum Cancer Centre

Phillips Ormonde Fitzpatrick

Powerjump Technologies

ProductiveMS

RAAF

RMIT University

Robogals Global

Royal Women's Hospital

SBE Australia

Startup Bootcamp

Stella Connect P/L

Strategic Project Partners

StreiferCo

Swarup Asthana Lawyers

Swinburne University

The Florey

The Social Science

The University of Melbourne

Thinktank Social

Unioart

veski

Victoria University

Victorian Clinical Genetic Services

Vino Bambino

Walter and Eliza Hall Institute

Work180

WSP Australia



inspiring
women



inspiring women STEM sidebyside founding partners

Mr Chris Holtby OBE

British Consul General Melbourne, UK Government

Dr Liz Jazwinska

Director, Business Development, Monash University

Ms Julia L Page

MD and chief executive, veski

Mrs Polly Holtby

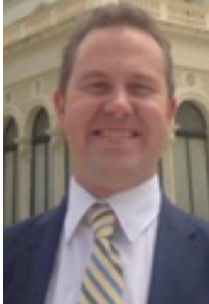
advisor & co-founder

Dr Rowan Brookes

Academic Program Director - STEM, M-SPACE, UoM

STEM sidebyside founding partner biographies

Mr Chris Holtby, OBE British Consul General Melbourne UK Government



Chris took up the post of Consul General in Melbourne and Head of the UK Office for South Australia, Tasmania and Victoria in September 2016. Prior to this role, Chris was Her Majesty's Ambassador to the Republic of Estonia from January 2012.

From 2007 to 2011, he was Deputy Head of Security Policy Department in the UK Foreign and Commonwealth Office, responsible for UK policy on NATO, European Security, military and civil-military operations and co-operation, as well as maritime security.

From 2009 to 2011 he was the chairman of Working Group 1 of the international Contact Group on Piracy off the Coast of Somalia, leading work on operational co-ordination and regional capability development.

From 2002 to 2007, he was seconded to the European Union in Brussels as UK liaison officer to Javier Solana, the High Representative for Common Foreign and Security Policy, and policy adviser to Dr Solana on Asia/Pacific issues.

Ms Julia L Page MD and chief executive, veski



Ms Julia Page was appointed chief executive of **veski** in 2004 after a career spanning the public, private and philanthropic sectors in Australia and the United Kingdom.

As the head of **veski**, Julia leads a team responsible for the continued development and delivery of **veski's** programs focused on talent acquisition and support, global engagement and **veski** testbed activities.

Julia has taken an active lead in inspiring women across Victoria and around the country. In 2015, Julia was instrumental in the development of the inspiring women program including a series of booked out professional development activities and the inaugural **veski** inspiring women fellowships.

Julia relocated to Melbourne in 2000. She completed a Bachelor of Science in Information Business Systems Technology at the University of Essex, UK before beginning a career in IT sales and strategic planning.

Julia sits on the board of the St Vincent's Hospital Foundation, Victorian Inspiring Australia and the Australian British Chamber of Commerce. Julia is also a Member of the Australian Institute of Company Directors. Julia joined the **veski** board of directors in March 2017.

Dr Liz Jazwinska **Director, Business Development, Monash University**

Liz is currently Director, Business Development in the Enterprise Portfolio at Monash University. In this role she is responsible for building University wide engagement with key strategic research partners. Prior to taking up her positions at Monash, Liz held senior leadership positions at RMIT, A*STAR in Singapore, the Ministry of Science and Innovation in New Zealand, the Australian Research Council, and Johnson & Johnson Research in Australia.

Liz trained in science (PhD), business (MBA) and directorship (GAICD), and has over 30 years' experience, having held senior roles in industry, academia and government in Australia and internationally. She has deep experience in embedding processes, driving quality and activity and building multi-million-dollar partnerships within large and complex organisations.



Ms Polly Holtby

After completing a BSc (Hons) in Chemistry with Industrial Experience at Manchester University, including a year-long industrial placement with Dow Chemicals in Germany, Polly joined Procter and Gamble in Belgium, working in upstream product development in their Fabric & Homecare Division. She later moved to their Healthcare Division, based in the UK, managing both upstream product development and market delivery projects. Following an extended career gap caring for her children and living in Belgium and the UK, Polly worked in financial management for Lighthouse Global, a London firm of management consultants, before moving to Estonia and then to Australia.

Polly enjoys community involvement to help her embed in each place she lives and has held a range of roles such as President of the school Parents' Association and Treasurer of the International Women's Club of Estonia.



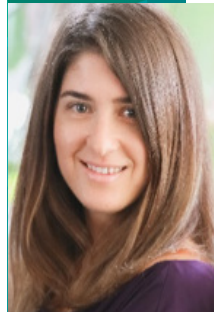
Dr Rowan Brookes **advisor & co-founder**

Academic Program Director - STEM, M-SPACE, UoM

Rowan has over a decade of experience leading educational change in science in Higher Education. She is currently the Academic Program Director of STEM at the Melbourne School for Professional and Continuing Education at the University of Melbourne.

Rowan is an advocate for women in STEM. In 2018, she co-founded the program to support women in STEM called STEM sidebyside. She sits of the Minister for Science and Innovation's Gender Advisory Roundtable and frequently mentors other women.

Rowan has a PhD and a BSc in ecology and a BA in anthropology and religious studies. She has also completed executive education in leadership at Harvard and Stanford, as well as other leading institutes. Her research interests centre on curriculum development, employability, educational technology and leadership in science education.



STEM sidebyside



inspiring
women



2019 program venue & event partners



British
Consulate-General
Melbourne



MONASH
University



Michael Page



Walter+Eliza Hall
Institute of Medical Research

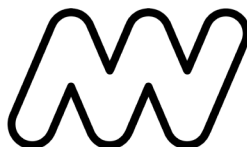
DISCOVERIES FOR HUMANITY



launchvic



Telstra



Department for
International Trade



inspiring
women



British
Consulate-General
Melbourne



MONASH
University

inspiring women STEM sidebyside

speaker & facilitator biographies

Ms Laura Anderson

Chairman, SVI Global

Ms Sue Carter

Director, Digital Conceptual Consulting

Ms Dina Pozzo

Director, insium

Ms Michelle Gallaher

CEO, ShareRoot & Managing Director, The Social Science

A/Professor Stella Clark AM

Executive Director, Stella Connect

Ms Sue Rosen

Director, Sue Rosen Executive Coaching

STEM sidebyside



inspiring
women



Welcome event keynote presentation - 30 May 2019

Ms Laura Anderson - Chairman, SVI Global

Laura has worked extensively across governments and industries locally and globally as a senior adviser on global governance, strategy transformation and risk optimisation. Her professional specialty has been in harnessing the power of big data and its effects on global supply chains, trade, investment and infrastructure development.

Laura is Chairman of SVI Global Pty Ltd, OneGlobalVenture Pty Ltd, LaunchVic and the Foundation for the Advancement of Science and Technology in Schools. Laura is on the Board of the Australian Grand Prix Corporation, Epworth HealthCare, the National Basketball League and the Defense Council Victoria. Laura is on the Board of the Fulbright Commission, American Australian Association, the Defense Science Institute and is a Director of several private investment companies.



Laura was honoured both as an Ambassador of International Women's Day on its 100th anniversary and as an Australia Day Ambassador and has supported the development and expansion of the Women of Influence program throughout schools locally and globally. She was honoured as a Fellow of the Chartered Institute of Transport for her contributions to industry and appointed as a Governor of the American Chamber of Commerce. Laura is emeritus Chair of the CEO Circle and immediate past Chairman of The Good Foundation (including Jamie Oliver's Ministry of Food) and the Melbourne Fashion Festival, one of the largest and most respected consumer fashion festivals in the world.

Laura continues to evolve as a global citizen - embracing health, education and economic development initiatives around the world. She is passionate about empowering the next generation, maximising women's potential and empowering comprehensive workforce participation. Laura is committed to the global development of the entrepreneurial ecosystem and backing the stars of tomorrow who just need the opportunity to shine.

@LauraAndersonGL



SVI GLOBAL

STEM sidebyside



inspiring
women



Welcome event speakers:

Ms Gretchen Cooke - Vic/Tas State Director – Enterprise, Telstra

Gretchen Cooke has worked at Telstra, in a variety of sales management and business development roles, for over ten years. A sales management and business development professional with over fifteen years' experience in the telecommunications industry across various domains of data networks, mobility, managed services and collaboration.

In July 2016 she was appointed as the Director of Unified Communications and Collaboration. Gretchen is now Victoria & Tasmania State Director, Enterprise and she continues to lead and motivate her team to partner with customers to co-create truly integrated solutions to meet business objectives.



Dr Tich-Lam Nguyen - 2018 Leading the Way participant Chief Operating Officer, Monash University

Dr Tich-Lam Nguyen is currently Chief Operating Officer for the ARC Centre of Excellence in Future Low-Energy Electronics Technologies, managing FLEET's operations and its business team. She is responsible for the Centre's financial and operational effectiveness and the oversight of activities contributing to the development and delivery of its strategic goals.

Tich-Lam holds a PhD in Chemistry from RMIT University and a Master of Management from the Melbourne Business School. She has over 10 years experience in the higher education sector within a collaborative and cross-disciplinary environment as a research centre manager, a laboratory manager and a researcher in Nanoscience and Nanotechnology.



@NHTichLam

STEM sidebyside



inspiring
women

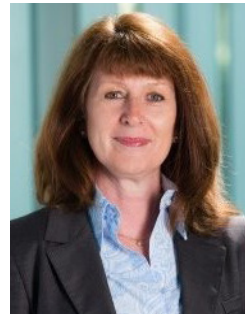


Ms Sue Carter - Director, Digital Conceptual Consulting

Your transition back to work after a career break - 3, 13, 24 June 2019

Susan is the founder of Digital Conceptual Consulting, which originated after more than 20 years' experience working with people in multi-national organisations focussing on human and cultural transformation.

Sue has built her capability in Organisation Development & Learning within Australia and Asia Pacific, with focus and professional interests in the field of Organisational Development and Learning working to develop employee selection & development programs, career and talent planning, organisational culture change programs, leadership development and performance management to enable all employees in the organization to achieve their professional potential.



Sue understands the rapid pace of technological change impacting all industries and has developed programs and services aligned with enabling Industry 4.0 – the Fourth Industrial Revolution. The programs enable new entry level pathways to employment and assisting current employees to transition to a digital workplace business program, which require a new approach to leadership and talent development in order to prepare employees for a workplace where increased automated will give rise to new work and ways of working. Sue advocates the focus for employees to build their own understanding and determine how to respond by taking part in the change in an engaged and empowered way.

Sue holds a Diploma of Teaching, Graduate Diploma of Special Education, Bachelor of Special Education, Graduate Certificate of Work Education, Graduate Diploma of Human Resource Management and a Masters of Business Administration.

Sue is also a Graduate of the Australian Institute of Company Directors (GAICD).

Sue delivered the **Your transition back to work after a career break** workshop as part of the 2019 **STEM sidebyside** program.

Session 1 - 3 June 2019 @ EY

Session 2 - 13 June 2019 @ WEHI

Session 3 - 24 June 2019 @ EY

@digiconceptual

digitalconceptual@iinet.net.au

www.digitalconceptualconsulting.com

**DIGITAL
CONCEPTUAL
CONSULTING**

Ms Dina Pozzo - Director, insium

Leading self with Courage - Monday, 15 July 2019

Established in 2005, insium, named after the Italian verb “to dream”, conveys the ideas of hope, vision and inspiration; of wisdom and learning; and also of sharing stories, experiences and ideas. insium has succeeded in building strong and collaborative partnerships with its clients; working closely with them to clearly define and deliver on organisational priorities and strategies.

With more than twenty years' experience in learning and organisational development both locally and internationally, Dina is a highly skilled facilitator, speaker and coach. Having recently completed a Master of Applied Positive Psychology from the University of Melbourne her keen interest in building the courage reserves of our leaders has been piqued.

Her natural enthusiasm and ability to quickly build relationships creates a shared learning journey of curiosity and discovery, challenge and encouragement. Dina's ultimate aim is to broaden minds and build skills, capability and confidence - empowering individuals to implement successful plans of action for sustainability and to have positive impact on organisational goals.

Dina has a passion for positive, generative approaches to leadership development, resulting in transformational shifts in performance and wellbeing for individuals, teams and organisations.

She prides herself on her client-centric approach, building and sustaining partnerships by working closely with clients to define and deliver on organisational priorities and strategies. Dina has worked with senior and executive business leaders, people managers, professionals and teams, and continues to partner with industries such as banking and finance, pharmaceuticals, medical technology, entertainment, engineering, biotechnology, hospitality, FMCG, manufacturing and not-for-profit.

Dina presented insium's “Leading with Courage” program at the 5th World Congress of Positive Psychology in Montreal.

Dina delivered the **Leading self with Courage** workshop as part of the 2018 & 2019 **STEM sidebyside** program.



dina@insium.com.au
@CourageChick
www.insium.com.au

Ms Michelle Gallaher – CEO, ShareRoot & MD The Social Science Becoming an online influencer - Monday, 12 August 2019

A master networker in life sciences, business, government and the media, Michelle Gallaher is a living rolodex of names, faces and technologies in Australia.

She is focused on helping public and private innovation-centric organisations understand how to influence to achieve outcomes using social and mainstream media, marketing and brand strategies coupled with relationship strategies targeted at government, investors, advocates, collaborators and users.

Previously the CEO of the largest geographic cluster of biotech and medtech in Australia, she is the co-founder of a new social media consultancy exclusively for the science and technology sector, called The Social Science and co-founder and director of Women in Science Australia, an advocacy organisation supporting women in STEM with more than 10,000 members.

For over 20 years Michelle has worked in numerous influencing and development roles in biotech, research organisations and the healthcare sector. She has held and continues to hold leadership roles in the Victorian science and medical research industry in universities and companies as a non-executive director, on various government advisory committees on life sciences and health and is a recognised champion of gender equity and diversity and the advancement of clinical trials in Australia.

Renowned for loving a microphone and a soapbox, Michelle is an accomplished speaker, appearing at TEDx Melbourne and regularly on webinars, podcasts and the conference circuit.



Michelle delivered the **Becoming an online influencer** workshop as part of the 2019 **STEM sidebyside** program.

michelle@thesocialscience.com.au
@StartupShelley
www.thesocialscience.com.au

STEM sidebyside



inspiring
women



A/Prof Stella Clark AM – Executive Director, Stella Connect

Getting on a board and networking for various situations - Tuesday, 10 Sept 2019

Stella runs her own business Stella Connect P/L, helping people, organisations and their ideas connect to maximise productive outcomes. Previously she was CEO of Obesity Australia and for nine years before that was CEO of the Bio21 Cluster, Victoria's leading health sciences/biotechnology research cluster. This was preceded by senior management roles at the School of Graduate Studies, University of Melbourne and the Baker Heart Research Institute.

After gaining a PhD from the University of Melbourne in 1984, Stella spent three years as a CJ Martin Fellow at the Imperial Cancer Research Fund in London before returning to a research career in Australia. Her career as a biomedical research scientist in the area of diabetes was recognised in 2014 when she was listed on the NHMRC website as “High Achievers in Australian Health and Medical Research”. In 1994, Stella helped establish the Premier's Award for Medical Research in Victoria, which recognises outstanding talent amongst young Victorian medical researchers.

Stella is currently on the Boards of The Bionics Institute, the ARC Centre of Excellence for Integrative Brain Function and The Garnett Passe and Rodney Williams Memorial Foundation. Since 2012 Stella has been an Honorary Principal Fellow at the University of Melbourne, Department of Medicine, Royal Melbourne Hospital. In 2013 she was awarded a Certificate of Merit upon graduation from the AICD Company Director's Course and in 2018 became an Honorary Life Member of the BioMelbourne Network. Stella was made a Member of the Order of Australia in the 2019 Queen's Birthday Honours.



Stella delivered the **Getting on a board & networking for various situations** workshop as part of the 2019 **STEM sidebyside** program.

stella@stellaconnect.com.au



Getting on a board & networking for various situations panel:

Ms Anna Burke AO - Member, Administrative Appeal Tribunal, veski director

Anna Burke is a former Speaker of the Australian House of Representatives. She is currently a full-time Member of the Administrative Appeals Tribunal.

As a member of the Australian Labor Party, Anna represented the Division of Chisholm, Victoria in the Australian House of Representatives from 1998 to 2016. This role gave her a unique insight into the importance of innovation for Australia, particularly industry in Melbourne's eastern suburbs.

Anna also provides an example for women across Australia. Not only did she juggle a successful career in politics with raising a family, she was also only the second MP to have a child and continue representing her electorate.



Anna graduated from Monash University with a Bachelor of Arts degree with Honours in English Literature. She later received a Master of Commerce with Honours in Industrial Relations and Human Resource Management from the University of Melbourne.

Before entering politics, Anna worked as a trade union official and human resources manager. In this capacity, she worked for VicRoads and for Victoria University (then the Victorian Institute of Technology).

Anna joined the Finance Sector Union as their National Industrial Officer in 1994, and was then elected to represent the Division of Chisholm in the Australian House of Representatives in 1998. After Labor's win at the 2007 federal election, she was elected as Deputy Speaker of the House of Representatives. She successfully defended her seat in the 2010 federal election.

In 2011, Anna accepted the Opposition's nomination for the position of Deputy Speaker. In 2012, she was nominated and elected, unopposed, the new Speaker of the House of Representatives.

On 16 January 2017, Anna was appointed as a full-time Member of the Administrative Appeals Tribunal. She was appointed to the veski board on 21 June 2017.

Anna is a graduate and member of the Australian Institute of Company Directors. On Australia Day 2019, Anna was awarded an Order of Australia for service to the Parliament and the Community.

Getting on a board & networking for various situations panel:

Dr Leonie Walsh – Director and Founder, ProductiveMS

Leonie Walsh is a strategic adviser in technological innovation with over 30 years of local and international experience across a broad range of industries.

Leonie's career bridged across Government and Academia as the inaugural Lead Scientist for the Victorian Government from 2013 to 2016 with a focus on innovation, technology commercialisation and the future skilled workforce.

Leonie draws from her experience to contribute on a range of boards and advisory activities across sectors including advanced manufacturing, renewable energy and the circular economy.

An additional area of interest for Leonie is in blood cancer support services through her Chair role with the Fight Cancer Foundation and roles on the BMDI Cord Blood Bank Management Committee and the National Management Board of the Australian Bone Marrow Donor Register.

Leonie is a Fellow of the Australian Academy of Technology and Engineering and was the Inaugural Ambassador for Women in STEMM Australia.



@lkw_sci

Ms Natalie Collard – Non Executive Director

Natalie Collard is an accomplished executive and highly-regarded advocate for sustainability, innovation and women's leadership. She has worked in transport, energy, agriculture and international affairs.

In 2013, Natalie was awarded Telstra Business Woman of the Year - Victoria (Community and Government) in recognition of the business transformation she led as CEO of Australian Dairy Farmers Ltd.

In July 2018, Natalie was awarded Woman in Renewables of the Year for her work as Chair of Women in Renewables (Australia) and EGM Industry Development at the Clean Energy Council.

Natalie's other career highlights include leading Telstra's Corporate Affairs for Victoria and Tasmania, managing an emergency post-September 11 arms control meeting of 32 countries in Paris, and speaking at the United Nations in Geneva on biological weapons. She has managed \$1.2bn in corporate contracts and, as Defence's lead negotiator on security treaties, negotiated seven bilateral agreements, including Australia's first treaty with an organisation, NATO.



@nrcollard

STEM sidebyside



inspiring
women



MONASH
University

Embracing conflict & difficult conversations facilitator:

Ms Sue Rosen - Sue Rosen Executive Coaching

Sue is an executive and leadership coach, passionate about empowering people to find freedom and fulfilment in their lives. She specialises in working with professionals seeking to develop their capacity for authentic leadership. To navigate their life and career obstacles she helps them to get clarity around their values, purpose and goals so that they can achieve success, fulfilment and balance.

Sue is an accredited executive coach, as well as a Chartered Accountant with many years experience in senior finance roles so she has a deep understanding of the challenges facing leaders in the complex world of the 21st century. Sue is passionate about enabling people to bring their best selves to work, and brings a pragmatic approach and a desire for maximising human potential to all her work.



sue@suerosen.com.au
@suerosencoaching
www.suerosen.com.au

sue rosen
executive coaching

Embracing conflict & difficult conversations panel:

Ms Natalie Waldie - Program Manager, Technology Department BAE Systems Australia

Natalie graduated from a combined degree in Engineering and Computer Science from the University of Melbourne in 2000. Upon graduating, Natalie joined the Boston Consulting Group as a management consultant for 2 years, before moving back to engineering with a large multi-national defence company, BAE Systems.

Her roles at BAE Systems span simulation and modeling, engineering design, engineering management, project management and business development, and include a transfer to work with Lockheed Martin in the USA for 2 years.

In her current role, Natalie manages all of BAE Systems' Australian research and technology programs. Outside of work, Natalie is a keen distance runner, volunteer Guide Leader, and enthusiastic gardener.



Embracing conflict & difficult conversations panel:

Mr Adam Williams - Acting General Manager, Information Technology Maurice Blackburn Lawyers

As the leader of the IT team at Maurice Blackburn, my first focus is my team, supporting individuals as a mentor, to guide them through their careers, helping them achieve their goals. Leading the way for 20+ staff can be a challenge but at the same time, it is a reward.

Looking back at my career, it is still hard for me to believe that a college dropout from Dublin, Ireland, that started his career in the mailroom of an assurance company, is 13 years later, the head of IT at Australia's leading social justice law firm.

With a track record of being highly motivated, unrelenting, business focused as well as passionate about technology and people, I have helped companies to continuously innovate, improve performance and to drive business outcomes.



@adam_d_williams

Dr Manjari Mehta - Consus Global

Manjari has 17+ years of experience across scale-ups, management consulting, and academia. In her early years, she was a faculty member at Universities of Melbourne and Houston.

Her consulting at KPMG covered technology due diligence, business cases and operating models for M&As and business transformations. She was then responsible for the sales and marketing in the ANZ region and global head of technology partnerships for a cloud procurement services scale-up, where she is now a strategic advisor.

She has worked across 15+ verticals including financial services, utilities, and manufacturing.



STEM sidebyside



inspiring
women



2019 Stamina program

date	program	venue
30 May	Welcome event	Telstra Global Office Customer Insights Centre 242 Exhibition Street
3 June	Transition back to work after a career break	EY 8 Exhibition St Melbourne CBD
13 June	Transition back to work after a career break	WEHI Seminar Room 1 1G Royal Parade, Parkville
24 June	Transition back to work after a career break	EY 8 Exhibition St Melbourne CBD
15 July	Leading self with Courage	Victorian Innovation Hub Goods Shed North 710 Collins St, Docklands
12 August	Becoming an online influencer	National Australia Bank The Bowl 500 Bourke Street
18 November	Closing event	Melbourne Museum 11 Nicholson Street



inspiring
women



MONASH
University

inspiring women STEM sidebyside

Stamina participants

Dr Sophie Broughton

Ms Melissa Chan

Mrs Elizabeth Comrie-Thomson

Ms Kelly Durrant

Dr Sidonia Eckle

Mrs Arjumand Khan

Dr Yaoxin Hu

Dr Tamara Yawno

tweet us
#STEMsidebyside
#veski
@veskiorg

Stamina: Women returning to work



Dr Sophie Broughton
Research Fellow
The University of Melbourne

Dr Sophie Broughton is a structural biologist at the University of Melbourne (The Bio21 Institute) who has been working on understanding how the beta common receptor cytokines signal, and their aberrant activity in leukaemia. She uses state-of-the-art technology to reveal the 3D structure of leukaemia proteins for specific therapeutic design.

She worked as a Leukaemia Foundation postdoctoral fellow at St Vincent's Institute for Medical Research (2012-2018) and has successful grant funding from Cure Cancer and Cancer Council Victoria. She has presented her findings at both national and international conferences and has been awarded a number of prizes.



Ms Melissa Chan
Lecturer
Victoria University

Melissa Chan is a lecturer at Victoria University's College of Science and Engineering.

Prior to joining Victoria University, Melissa was on parental leave while working as a lecturer at Deakin University's Faculty of Science, Engineering and Built Environment.

She has more than 8 years of experience in building and construction industry and has previously acquired registration with professional bodies.



Mrs Elizabeth Comrie-Thomson
Women's and Children's Health Specialist
Burnet Institute

Liz Comrie-Thomson is a trained social science researcher working in the field of global public health. Her work at Burnet Institute and Monash University contributes to the evidence base for policy and service delivery recommendations for maternal-child health in low- and middle-income countries. Her research and programming work includes a particular focus on engaging men and boys, and women and girls, together to address unequal gender relations, often as a strategy to improve perinatal health outcomes.

Liz led the development of the current global guideline on male involvement as a health promotion strategy for maternal and newborn health in resource-constrained settings, issued by the World Health Organization in 2015.

Stamina: Women returning to work

Ms Kelly Durrant
Senior Manager, Maternal and Child Health
Burnet Institute



Kelly Durrant is a senior health management professional with experience working across the not-for-profit, academic and government sectors in health and science. She is a passionate advocate for women and gender equity, with expertise in sexual reproductive health and rights, maternal neonatal child and adolescent health (MNCAH) menstrual hygiene, HIV, gender equality, healthy ageing, health systems strengthening and qualitative and quantitative research methods.

Her diverse experience has involved work across Asia, the Pacific and Africa and includes project management, business development, strategic planning, stakeholder engagement, policy analysis and influencing, financial management and advocacy.

Dr Sidonia Eckle
ARC DECRA Research Fellow
Doherty Institute, The University of Melbourne



Dr Sindonia Eckle is a researcher in immunology at the Doherty Institute, supported by an ARC DECRA fellowship and an NHMRC New Investigator project grant. Her area of expertise is a subset of lymphocytes, where she plays a key role in discovering the class of molecules that stimulates these cells to provide protective immunity (Nature 2014, WO/2015/149130) and the modulation of these cells by drugs (Nature Immunology 2016).

Sindonia is passionate about my personal and professional development, with a particular interest in research commercialisation. In 2016, she was a mentee of a women in science cross-sector leadership program with National Australia Bank.

Mrs Arjumand Khan
Environmental Scientist

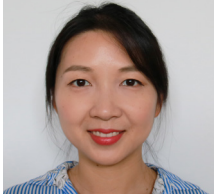


Arjumand Khan is a passionate Environmental Scientist and a Science Communicator.

Active in Community Outreach, where she takes Science into society through various avenues, one being a newly founded STEM Club run by STEM professional parents in a local school. Through her love and passion for Science she motivates young scientists and strives to be a change maker and a leader in STEM. She has been successfully delivering her Science Show, "Science involves in Culture-Toothpaste Trees" to a variety of audiences of all ages since 2017. Her show is now listed on the National Science Week website.

She volunteers her time as a President for Multi-cultural Women's Social Group and help other women get involved and envisions bringing positive change in the community.

Stamina: Women returning to work



Dr Yaoxin Hu
Research Fellow
Monash University

Dr Yaoxin Hu completed her PhD at Monash University in 2018. Currently, She is a postdoctoral research fellow in the ARC Research Hub for Energy-efficient Separation. Her research focuses on developing advanced membrane technologies for efficient gas separation and water treatment.

Yaoxin has published over 25 high-impact journal papers and presented her research findings in several international conferences. Yaoxin used work at State Key Laboratory of Material-Oriented Chemical Engineering in China.



Dr Tamara Yawno
Research Fellow
Hudson Institute of Medical Research

Dr Tamara Yawno is a Cerebral Palsy Research Fellow. Her research on neonatal seizures has lead her to the success of a current NHMRC grant worth \$883,209.00. She has developed an international reputation for her research on neurosteroids and neuroprotection in the fetus and neonate.

In March 2019, Tamara received an award for best research in the field of cerebral palsy at the PSANZ congress, which led to a current clinical trial on neonatal seizures (The GAINS Trial). She received research grant funding of up to \$2 million. Tamara has also won several prizes at international and national meetings.



STEM sidebyside



inspiring
women



British
Consulate-General
Melbourne



MONASH
University

2019 Leading the Way program

date	program	venue
30 May	Welcome to be Inspired	Telstra Global Office Customer Insights Centre 242 Exhibition Street
15 July	Leading Self with Courage	Victorian Innovation Hub Goods Shed North 710 Collins Street, Docklands
12 August	Becoming an online influencer	National Australia Bank The Bowl 500 Bourke Street
10 Sept.	Getting on a Board	National Australia Bank The Bowl 500 Bourke Street
24 October	Embracing conflict & Difficult conversations	Michael Page C/o Engineers Australia 600 Bourke Street
18 November	Closing event	Melbourne Museum 11 Nicholson Street

inspiring women STEM sidebyside

Leading the Way participants

A/Prof Ilana Ackerman
Dr Wendy Adams
Dr Vicky Au
Dr Natalie Borg
A/Prof Colette Boskovic
A/Prof Charlotte Conn
Dr Megan Finch-Edmondson
Dr Jacqueline Flynn
Dr Amy Gelmi
Dr Göknur Giner
A/Prof Stephanie Gras
Dr Joanna Groom
Dr Joanne Hall
Ms Veronica Halupka
Mrs Rachel Harding
A/Prof Michelle Harvey
A/Prof Kim Jacobson
A/Prof Tu'uhevaha Kaitu'u-Lino
Dr Emma Link

Ms Jing (Cathy) Liu
Dr Justine Marum
Mrs Tamara McCulloch
Dr Sheena McGowan
Dr Annabella Newton
Dr Milica Ng
Dr Michelle Peate
Mrs Samantha Profke
Dr Mirana Ramialison
Dr Dianne Ruka
Ms Helena Sfelagis
Dr Kiran Shah
A/Prof Lesley Stafford
Dr Nicole Stupka
A/Prof Sylvia Urban
Dr Lakshmi Wijeyewickrema
Dr Vanessa Wong
Dr Xing Yang



Associate Professor Ilana Ackerman
Associate Professor (Research)
Monash University @IlanaAckerman

Associate Professor Ilana Ackerman is a musculoskeletal epidemiologist in the School of Public Health and Preventive Medicine at Monash University and an experienced physiotherapist. Her research program includes clinical and population studies that aim to understand the personal and societal burden of osteoarthritis.

Ilana has been awarded a range of competitive grants and prizes and has published widely. Her projects involve cross-disciplinary collaboration, with a strong focus on stakeholder engagement and research translation.



Dr Wendy Adams
Business Analyst
The Bionics Institute of Australia

Dr Wendy Adams completed her undergraduate and postgraduate studies in biomedical science and neuroscience at the University of Melbourne in 2010. Her PhD research, conducted at the (then) Mental Health Research Institute, investigated brain serotonin systems in schizophrenia.

After a year at Monash University coordinating a clinical psychology project, Wendy moved to Canada for a (long) postdoc at the University of British Columbia. Her postdoctoral research explored the neurobiology of impulsivity and decision-making related to addiction and gambling.



Dr Vicky Au
National Lead, Engagment & Strategy
CSIRO

Dr Vicky Au is a passionate leader, mentor and advisor with nearly 20 years of experience in the innovation ecosystem. She is currently the National Lead for Engagement and Strategy for CSIRO Futures, the strategy consulting arm of CSIRO. In this role, she is responsible for driving sustainable growth for the practice through consulting engagements, internal strategy and practice development, and overseeing marketing activities.

Vicky is a vocal champion of gender and cultural representation in senior leadership and in STEM industries.

Dr Natalie Borg
Senior Research Fellow & Laboratory Head
Monash University



Dr Natalie Borg was awarded her PhD from the University of Melbourne. In 2003 she joined Monash University as a post-doctoral research fellow at the Department of Biochemistry and Molecular Biology. During this time Natalie's research published in leading journals, including Nature, and in recognition she received many government funded fellowships and awards including a L'Oréal for Women in Science Fellowship.

Leveraging off this success she launched her own research group at Monash University. Her research program is driven by the urgent need to discover, develop and deploy novel therapeutics to combat microbial infections of significance to human health.

Associate Professor Colette Boskovic
Associate Professor of Chemistry
The University Of Melbourne @ColetteBoskovic



Associate Professor Colette Boskovic obtained her BSc(Honours) and PhD degrees from the University of Melbourne, undertaking research in inorganic chemistry. After post-doctoral stints at Indiana University and at the University of Berne, she returned to the University of Melbourne in 2004, where she is now an Associate Professor in the School of Chemistry.

She leads the Inorganic Molecular Materials group at the University of Melbourne and her specific research interests lie in the fields of molecular magnetism, lanthanoid chemistry, redox-active ligands and switchable molecular materials.

Associate Professor Charlotte Conn
Vice Chancellor's Senior Research Fellow
RMIT University



Charlotte Conn is an Associate Professor and a 2017 Vice Chancellor's Senior Research Fellow in the School of Science, RMIT University. She is the current Vice-President for the Australasian Colloid and Interface Society. Her research interests focus on the development of advanced nanomaterials using high-throughput experimentation and the use of these biomimetic nanomaterials for the delivery of protein and peptide-based drugs, including anti-microbial peptides which are part of the global fight against antibiotic resistance.

In her spare time she loves running in the Irish mountains where she grew up and along the beautiful Australian beaches she now calls home.



Dr Megan Finch-Edmondson
Research Fellow
Cerebral Palsy Alliance @MFinchEdmondson

Dr Megan Finch-Edmondson received her PhD in 2015 from the University of Western Australia for her work on signalling pathways and their contribution to cell biology and cancer. She then spent 2.5 years as a post-doctoral research fellow at the National University of Singapore before returning to Australia to take up the role of Stem Cell Research Fellow at the Cerebral Palsy Alliance Research Institute, based at the University of Sydney.

Her current role is to significantly build capacity for stem cell research for cerebral palsy in Australia, particularly in neuro-protective and neuro-regenerative clinical trials.



Dr Jacqueline Flynn
Project Leader, Postdoctoral Researcher
Monash University @jflynn007007

Dr Jacqueline Flynn is an expert in chronic disease research and leads projects developing novel therapeutics for SLE, in the Rheumatology Research Division at Monash University. She has a passion for clinical immunology research with her expertise encompassing a diverse skill set of human immunology, clinical trials and translational research. Her research has contributed to the development of new vaccine delivery systems and critically needed health policy changes.

Jacqueline's research vision is to improve the health of those suffering from chronic disease by providing new therapeutics to millions worldwide.



Dr Amy Gelmi
Vice Chancellor's Research Fellow
RMIT University @DrTinyTaps

Dr Amy Gelmi is a Vice Chancellor's Research Fellow at RMIT University in the School of Science. Dr Gelmi's research takes a multidisciplinary approach to characterising the live response of stem cells on 'smart biomaterials', focusing on developing new approaches for individual patient stem cell therapy.

She completed her PhD at the University of Wollongong in 2013, and then moved abroad to Linköping University, Sweden, for her first postdoctoral position. Dr Gelmi then joined Imperial College London with a Marie Skłodowska-Curie Individual Fellowship in 2015. In 2018, Dr Gelmi returned to Australia to take up her fellowship at RMIT University.

Dr Göknur Giner
Postdoctoral researcher
The Walter and Eliza Hall Institute @goknurginer



Göknur is a postdoctoral scientist in Bioinformatics Division at WEHI. She has been using her mathematical and statistical skills to develop new bioinformatics methods needed for advancing genomics data analysis. In particular, she has been working to better understand the origins of the most invasive forms of breast cancer and to understand cancer metastasis as mediated by circulating tumour cells.

She is also the co-founder of R-Ladies Melbourne whose mission is to promote gender diversity in the R community. R is the world's most popular statistics software with more than two million users, but women have been heavily under-represented amongst R developers.

Associate Professor Stephanie Gras
Laboratory Head & NHMRC Senior Research Fellow
Monash University



Associate Professor Stephanie Gras is a mid-career medical researcher internationally recognised for her work on T cell immunology and Structural Biology. Shortly after completing her PhD in France, Stephanie moved to Monash University for her postdoctoral studies.

Since moving to Australia in 2007, she has been actively working in the area of Structural Immunology to better understand how our immune system recognises infectious agents.

Currently, A/Prof Stephanie Gras is a Laboratory Head and NHMRC Senior Research Fellow at Monash University. Her lab is focused on understanding the immune response to infection, with a keen interest towards viruses (Influenza and HIV).

Dr Joanna Groom
Laboratory Head
The Walter and Eliza Hall Institute @groomlab



Dr Joanna Groom is Laboratory Head in the Immunology Division at the Walter and Eliza Hall Institute and WEHI CSL Centenary fellow. Her research dissects the critical T cell interactions that enable protection against invading pathogens.

Joanna completed her PhD at the Garvan Institute, before undertaking postdoctoral training at Harvard/Massachusetts General Hospital. Dr Groom's research combines advanced imaging methods with transcriptional analysis to discover how distinct cellular interactions modulate immune outcomes. She believes that understanding and developing ways to regulate these interactions will lead to new strategies to prevent and control infectious disease and cancer.



Dr Joanne Hall
Lecturer
RMIT University

Dr Joanne Hall is a Lecturer in mathematics and cybersecurity at RMIT. Her research uses mathematical techniques to solve problems that will make telecommunications more secure and more reliable. Joanne teaches from the heart to inspire the next generation of cybersecurity professionals.

Prior to working at RMIT she lectured mathematics at QUT and was a research scientist at Charles University in Prague. Joanne is an advocate for women in mathematics, she was the inaugural secretary of the Women in Mathematics Special Interest Group of the Australian Mathematical Society.



Ms Veronica Halupka
Education Manager
Monash University

Veronica Halupka is the Education Manager for the Faculty of Engineering at Monash University. She has a teaching background in Media Design, previously worked as a researcher in a Mixed Reality/Human Computer Interaction lab and now researches in Engineering Education.

She has a passion for STEM education, and wants to see more women entering and thriving in the field.



Mrs Rachel Harding
Associate Director - Environment
AECOM Australia Pty Ltd

Rachel Harding is an Associate Director in the AECOM Melbourne office with more than seventeen years of environmental experience across a range of sectors including oil and gas, industrial facilities and public infrastructure.

With a chemical engineering background, Rachel has successfully managed complex multi-million-dollar environmental assessment projects and large, multi-disciplinary teams. Rachel is a team leader within the AECOM Environment group and is currently working on the Rail Infrastructure Alliance Metro Tunnel Project as the Land, Planning and Environment lead.

Associate Professor Michelle Harvey
Associate Head of School
Deakin University



Michelle Harvey is Assoc Professor in Forensic Biology and Associate Head of School (Curriculum) in the School of Life and Environmental Sciences at Deakin University. She is an entomologist, active in research maggot debridement therapy of wounds, and forensic use of insects to estimate time since death.

A passionate educator, she strives to be a role model and pioneer for other women in STEM. Active in outreach, where she takes science into society, she uses her enthusiasm and love for science to motivate young scientists. She strives to be a change-maker and leader in STEM.

Associate Professor Kim Jacobson
Senior Research Fellow
Monash University @KimLJacobson



Dr Kim Jacobson leads the B cells and Antibody Memory laboratory at Monash University, investigating epigenetic regulation of immune memory formation during acute and chronic infection.

Kim completed her PhD in 2007 (University of Sydney), followed by postdoctoral training at Yale University, where she revealed a novel role for PD-1 in antibody responses, and then the WEHI back in Australia.

Kim is a Bellberry-Viertel Fellow, and her work has made key insights into how B cell memory is produced and maintained. She was a 2016 Victorian Young Tall Poppy Science Award recipient and has written for The Conversation.

Associate Professor Tu'uhevaha Kaitu'u-Lino
Senior Scientist
The University of Melbourne



Associate Professor Tu'uhevaha Kaitu'u-Lino is a dynamic mid-career translational research scientist, passionate about pregnancy research. She is head of the Diagnostics Discovery and Reverse Translation Group based at the Mercy Hospital for Women. Working closely with clinicians, she aims to develop blood tests to predict women at risk of serious pregnancy complications such as preeclampsia, fetal growth restriction and stillbirth.

As a mum of four (aged 12, 9, 6 and 1), she is particularly passionate about promoting women in science and is an advocate for women being able to have a successful research career whilst also enjoying motherhood..



Dr Emma Link
Statistical Programme Coordinator & Senior Statistician
Peter MacCallum Cancer Centre

Dr Emma Link is a biostatistician with extensive experience in clinical trials, observational and epidemiological study planning, implementation, data analysis, interpretation and dissemination. She is passionate about application and development of appropriate statistical methods, ultimately leading to improvements in human health outcomes.

Emma has worked in oncology and heart studies at a specialist hospital and Universities in Melbourne and Oxford, with successes in attracting grant funding and publications cited over 1800 times, and have also developed skills in team management and coordination and teaching. She is aiming to be a Professor.



Ms Jing (Cathy) Liu
Program Manager
National Australia Bank

Cathy Liu is a delivery-focused, highly experienced and certified project delivery professional with 12 years' experience in delivering large scaled technology transformation projects/ programs in complex development & system integration across digital, cyber security, online fraud and financial crime domains.



Mrs Tamara McCulloch
Senior Specialist Representative - Oncology
Bristol-Myers Squibb

After completing a bachelor of health science at the University of Queensland, Tamara began working in the pharmaceutical industry. Over her 10 years in this industry, she has had a number of various roles, including: Sales Leader (recognised through promotion & awards), Brand Team Member (shaping sales strategy), D&I Leader (Australian lead of a global initiative and D&I core team), as well as One Young World Ambassador (global CSR network across various companies).

Tamara is passionate about intentional inclusion and creating an environment where diversity is celebrated - and as a result, see people, communities and organisations thrive.

Dr Sheena McGowan
Senior Lecturer and Laboratory Head
Monash University @DrSheenaMcGowan



Dr Sheena McGowan is formally trained as a microbiologist, however, during her PhD she developed what would become a long-standing interest in structure and function of proteins. She completed a post-doctoral position with Prof James Whisstock where she was trained in protein crystallography and biochemistry.

Sheena used the award of an ARC Future Fellowship to establish her own laboratory. The McGowan laboratory is a structural microbiology laboratory that focuses on therapeutically important microbial proteins and characterises how these proteins function on an atomic level. They investigate whether interruption of this function has therapeutic potential and then use this structural information to discover lead molecules and guide drug development.

Dr Justine Marum
Group Leader
Victorian Clinical Genetic Services @JustineMarum



Dr Justine Marum is group leader of the Reproductive Genetic Carrier Screening laboratory at Victorian Clinical Genetic Services (VCGS). Her role is currently focused on expanding VCGS's reproductive genetics testing portfolio and progressing VCGS's involvement in Mackenzie's Mission, an Australian Reproductive Genetics Carrier Screening Project aimed at making expanded carrier screening available on a population-wide basis.

Justine completed her PhD at the Murdoch Children's Research Institute (MCRI) and has a wealth of genomics experience which was gained through previous appointments at the MCRI, Royal Melbourne Hospital, SA Pathology and Australian Genomics.

Dr Annabella Newton
Associate
Phillips Ormonde Fitzpatrick @bellatronic



Dr Annabella Newton is a patent attorney, trade marks attorney and IP manager in the Chemistry & Life Sciences team at Phillips Ormonde Fitzpatrick, one of Australia's leading intellectual property law firms, where she specialises in protecting inventions in the chemical sciences. Annabella is particularly interested in the strategic role of intellectual property in the successful commercialisation of research.

Annabella is also a strong advocate for diversity in the STEM sector. She serves on the board for Women in STEMM Australia and she is a past president of the RACI's Women in Chemistry group.



Dr Milica Ng
Director, Head of Data Science
CSL Limited @milicang

Dr Milica Ng is a Data Science professional with achievements in biomedical research, entrepreneurship, international IT management consulting, and software engineering. Since 2013, Milica has worked for CSL, a global biotech company headquartered in Melbourne, employing 22,000 people in more than 30 countries. Milica is responsible for delivering state-of-the-art data management and analytics capabilities in the area of Bioinformatics, Biostatistics, Image Analytics, Molecular Systems Modelling and Artificial Intelligence.

Prior to that she completed her PhD at the University of Melbourne, developing new mathematical models in the area of metabolic engineering. She also has extensive experience as an international IT management consultant.



Dr Michelle Peate
Senior Research Fellow
The University of Melbourne @DrPeate

Dr Michelle Peate is the Program Leader for the Psychosocial Health and Wellbeing Research (emPoWeR) Unit based at the Department of Obstetrics and Gynaecology, University of Melbourne. In her current role she is overseeing several psycho-oncology research projects. Michelle was a 2011 NSW Young Tall Poppy and the 2017 International Psycho-Oncology Society New Investigator Award winner.

Her main goal is to develop patient resources and evaluate them in prospective, multi-centre studies. These include fertility decision aids for people with cancer and those with low health literacy, tools to support cancer survivorship, and exploring unmet needs of advanced cancer patients.



Mrs Samantha Profke
Laboratory Supervisor (Spectroscopy)
Australian Laboratory Services

Samantha Profke is a Spectroscopy Laboratory Supervisor who specialises in ICP-OES instrumentation. Based in ALS' Brisbane laboratory, she provides technical expertise to clients as well as training and support to a number of laboratories across the Asia Pacific region.

Samantha is passionate about the contributions of women in science, and personally mentors a number of female chemists. She has recently completed a Master of Business Administration and is looking to move further into management and into governance positions.

Dr Mirana Ramialison
Laboratory Head

Australian Regenerative Medicine Institute @ramialison_lab



Dr Mirana Ramialison received her Engineering degree from the University of Luminy, France in 2002, after which she worked as a database programmer at the ERATO differentiation project in Kyoto. After receiving her PhD in Developmental Genomics at the European Molecular Biology Laboratory in Heidelberg, Germany, she joined the Victor Chang Cardiac Research Institute in Sydney in 2010 as an EMBO and HFSP postdoctoral fellow.

She is now a Group Leader at the Australian Regenerative Medicine Institute, where she leads her Systems Developmental Biology laboratory researching on heart development, evolution and disease. Dr Ramialison is a NHMRC / Heart Foundation Career Development Fellow.

Dr Dianne Ruka
Education & Training Coordinator
Monash University @Di_Ruka



Dr Dianne Ruka grew up in a small town in rural Victoria. She completed a Bachelor of Science at the University of Melbourne before working in a genetics lab.

She worked as a secondary school teacher, but then returned to research to complete a PhD in Materials Engineering at CSIRO and Monash University. She currently works at Monash University as the Education & Training Coordinator with FLEET (the ARC Centre of Excellence in Future Low-Energy Electronics Technologies), where she takes research being completed in physics and materials engineering and translates it into educational tasks and demonstrations.

Ms Helena Sfelagis
Senior Scientific Advisor
GlaxoSmithKline (GSK)



Helena Sfelagis is a Senior Scientific Advisor within the vaccines medical department at GlaxoSmithKline (GSK). She is a registered pharmacist with 20 years' experience working both internationally and across Australia, for various retail pharmacy groups and pharmaceutical companies including GSK, Seqirus, CSL Biotherapies, AstraZeneca and Pfizer UK.

During her career, Helena has received recognition for exceptional performance in numerous projects and garnered experience across a broad range of therapeutic areas. Helena received her Bachelor of Pharmacy from the University of South Australia in 2001 and is a member of the Pharmaceutical Society and the Pharmacy Board of Australia.



Dr Kiran Shah
Chief Scientist
Magellan Stem Cells P/L

Dr Kiran Shah is a strong believer in 'Science for the Betterment of Human Life', her scientific journey began with strong determination to help those in need with innovative cellular therapies. With her extensive experience in translational research in stem cell therapy, she was able to play an instrumental role in carrying out over half a dozen ethics approved clinical trials and patient's safety as the highest standard.

To be at the forefront of modern cellular therapy, Kiran has been fortunate to truly bring her research from bench to the bedside for osteoarthritis patients suffering from chronic pain and lead a successful research team.



Associate Professor Lesley Stafford
Head of Clinical Psychology
Royal Women's Hospital @DrLStafford

Associate Professor Lesley Stafford is Head of Clinical Psychology in the Centre for Women's Mental Health at the Royal Women's Hospital and Associate Professor in the School of Psychological Sciences at Melbourne University. Her role at the Women's has included establishing both a clinical psycho-oncology service and a formal psycho-oncology research program.

Lesley's research interests are broadly in the psychological aspects of cancer, specifically, developing sustainable interventions to optimize the quality of life of patients and families affected by cancer. Her clinical work is predominantly with women with breast cancer and those at high risk of developing cancer.



Dr Nicole Stupka
Lecturer
Deakin University @Nicole_Stupka

Dr Nicole Stupka is a Lecturer in Medical Physiology at the Deakin University School of Medicine and she teaches cardiorespiratory physiology. Her research program investigates how antioxidant selenoproteins and connective tissue remodelling modulate muscle structure and function in the context of pathology and physiological adaptation. Excess oxidative stress and fibrosis are implicated in the pathogenesis of chronic disease and present a critical research challenge for the pharmaceutical industry and regenerative medicine.

She balances teaching and research with the demands of a young family, and is enthusiastic about long distance running, and camping.

Associate Professor Sylvia Urban
Associate Professor & Program Manager
RMIT University @Dr_S_Urban_RMIT



Associate Professor Sylvia Urban is one of Australia's leading natural product chemists in bioactive natural product discovery including anticancer natural products that have led to patents with industry. She has held research appointments at Griffith University and the University of Canterbury. She leads the Marine and Terrestrial Natural Product research group at RMIT University. Sylvia is Program Manager of the Bachelor of Science degree at RMIT, is a passionate educator and a leader in transforming education in STEM.

Serving as the Deputy Chair and committee member of the Women Researchers Network (WRN) at RMIT, as well the RACI Women in Chemistry group, her focus is to promote better opportunities for women in STEM.

Dr Lakshmi Wijeyewickrema
Laboratory Head
La Trobe University



Dr Lakshmi Wijeyewickrema received a B.Sc. in Biochemistry from the University of Greenwich, London, U.K in 1995. She was awarded her PhD in 2007 for a study undertaken in the laboratory of Professor Michael Berndt and Professor Robert Andrews. She identified novel proteases and inhibitors from snake venom and characterised their biochemical function in regard to platelet activation.

Lakshmi continued her interest in the biochemistry of blood in the laboratory of Professor Robert Pike. Her expertise in protein production and enzymology has helped establish an international profile in serine protease biochemistry with a particular emphasis on the Complement system.

Dr Vanessa Wong
Senior Lecturer
Monash University @DrVanessaWong



Dr Vanessa Wong is a soil scientist and Senior Lecturer in the School of Earth, Atmosphere and Environment at Monash University. She completed her PhD at the Australian National University and then worked as a research scientist at Geoscience Australia and Southern Cross University. Her research broadly focuses on soil chemistry and assesses the interactions between soils, sediments and water.

Vanessa works in both agricultural environments, assessing the effects of land degradation and potential remediation options, and natural environments, seeking to understand biogeochemical cycling in wetland soils.



Xing received her PhD from Nanyang Technological University, and is the editor of Desalination and Heliyon Journals. She received awards including Young Academics Award and Vice Chancellor ECR Award. She led a demonstration trial on nutrient recovery that won the finalist for Research Innovation Award by AWA. Xing was the regional coordinator of International Desalination Association.

Notes

[illegible]

Notes



A series of horizontal dotted lines spanning the width of the page, intended for handwritten notes.

Notes



A series of horizontal dotted lines for writing notes.



STEM sidebyside



inspiring
women



program in 2020

How to support the program

There are a number of opportunities to support the **veski** inspiring women **STEM sidebyside** program in 2020:

- **Venue partners**

Venue partners are sought to host half/full day workshops and masterclasses and to provide light refreshments during these sessions.

- **Identify applicants**

Help to identify eligible female applicants and support them to apply.

- **Fund a scholarship**

Assist in funding Aboriginal or Torres Strait Islander people working in STEM sectors to attend the program to ensure they benefit from the programs aims.

- **Financial support**

Financial support is sought in cash and in-kind for co-contributions for the delivery of the program from academia, industry and philanthropic organisations.

Please contact a member of the founding partners to discuss how you can get involved

e: admin@veski.org.au

t: 03 9635 5700



veski

Level 2

116 Hardware Lane
Melbourne, 3000

T: 03 9635 5700

E: admin@veski.org.au

tweet us
#STEMsidebyside
@veskiorg
#veski

veski is proudly
supported by
our founding partner

